

Datasheet for ABIN2459370
anti-C6orf192 antibody



[Go to Product page](#)

1 Image

Overview

Quantity:	100 µL
Target:	C6orf192
Reactivity:	Human
Host:	Rabbit
Clonality:	Polyclonal
Conjugate:	This C6orf192 antibody is un-conjugated
Application:	Western Blotting (WB), ELISA

Product Details

Immunogen:	Antibody produced in rabbits immunized with a synthetic peptide corresponding a region of human C6orf192.
Purification:	Antibody is purified by peptide affinity chromatography method.

Target Details

Target:	C6orf192
Alternative Name:	C6orf192 (C6orf192 Products)
Background:	The exact function of C6orf192 remains unknown. This gene encodes a protein, which has high sequence similarity to rat, xenopus and zebrafish proteins. The protein function is unknown.
Molecular Weight:	49 kDa
Gene ID:	116843

Target Details

NCBI Accession: [NP_439896](#)

UniProt: [Q6NT16](#)

Application Details

Application Notes: C6orf192 antibody can be used for detection of C6orf192 by ELISA at 1:1562500. C6orf192 antibody can be used for detection of C6orf192 by western blot at 1 µg/mL, and HRP conjugated secondary antibody should be diluted 1:50,000 - 100,000.

Restrictions: For Research Use only

Handling

Format: Lyophilized

Reconstitution: Add 50 µL of distilled water. Final antibody concentration is 1 mg/mL.

Concentration: 1 mg/mL

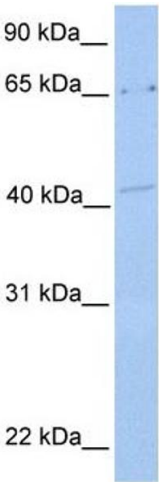
Buffer: Antibody is lyophilized in PBS buffer with 2 % sucrose.

Handling Advice: As with any antibody avoid repeat freeze-thaw cycles.

Storage: 4 °C/-20 °C

Storage Comment: For short periods of storage (days) store at 4 °C. For longer periods of storage, store C6orf192 antibody at -20 °C.

Images



Western Blotting

Image 1.