



Datasheet for ABIN2459373  
**anti-ELFN2 antibody**



[Go to Product page](#)

1 Image

Overview

Quantity:	100 µL
Target:	ELFN2
Reactivity:	Human, Mouse, Rat
Host:	Rabbit
Clonality:	Polyclonal
Conjugate:	This ELFN2 antibody is un-conjugated
Application:	Western Blotting (WB), ELISA

Product Details

Immunogen:	Antibody produced in rabbits immunized with a synthetic peptide corresponding a region of human ELFN2.
Purification:	Antibody is purified by peptide affinity chromatography method.

Target Details

Target:	ELFN2
Alternative Name:	ELFN2 ( <a href="#">ELFN2 Products</a> )
Background:	ELFN2 is a single-pass membrane protein. It contains 1 fibronectin type-III domain and 5 LRR (leucine-rich) repeats. The exact function of ELFN2 remains unknown.
Molecular Weight:	90 kDa
Gene ID:	114794

## Target Details

NCBI Accession: [NP\\_443138](#)

UniProt: [Q5R3F8](#)

## Application Details

Application Notes: ELFN2 antibody can be used for detection of ELFN2 by ELISA at 1:1562500. ELFN2 antibody can be used for detection of ELFN2 by western blot at 1 µg/mL, and HRP conjugated secondary antibody should be diluted 1:50,000 - 100,000.

Restrictions: For Research Use only

## Handling

Format: Lyophilized

Reconstitution: Add 50 µL of distilled water. Final antibody concentration is 1 mg/mL.

Concentration: 1 mg/mL

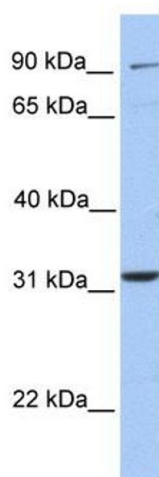
Buffer: Antibody is lyophilized in PBS buffer with 2 % sucrose.

Handling Advice: As with any antibody avoid repeat freeze-thaw cycles.

Storage: 4 °C/-20 °C

Storage Comment: For short periods of storage (days) store at 4 °C. For longer periods of storage, store ELFN2 antibody at -20 °C.

## Images



### Western Blotting

Image 1.