

Datasheet for ABIN2459393  
**anti-SPOPL antibody**



[Go to Product page](#)

1 Image

## Overview

Quantity:	100 µL
Target:	SPOPL
Reactivity:	Human, Mouse
Host:	Rabbit
Clonality:	Polyclonal
Conjugate:	This SPOPL antibody is un-conjugated
Application:	Western Blotting (WB), ELISA

## Product Details

Immunogen:	Antibody produced in rabbits immunized with a synthetic peptide corresponding a region of human SPOPL.
Purification:	Antibody is purified by peptide affinity chromatography method.

## Target Details

Target:	SPOPL
Alternative Name:	SPOPL ( <a href="#">SPOPL Products</a> )
Background:	SPOPL belongs to the Tdpoz family. It contains 1 BTB (POZ) domain and 1 MATH domain. In complex with a cullin, SPOPL may act in ubiquitination and proteasomal degradation processes.
Molecular Weight:	45 kDa
Gene ID:	339745

Target Details

NCBI Accession:	NP_001001664
UniProt:	Q6IQ16

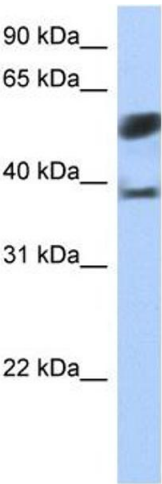
Application Details

Application Notes:	SPOPL antibody can be used for detection of SPOPL by ELISA at 1:1562500. SPOPL antibody can be used for detection of SPOPL by western blot at 1 µg/mL, and HRP conjugated secondary antibody should be diluted 1:50,000 - 100,000.
Restrictions:	For Research Use only

Handling

Format:	Lyophilized
Reconstitution:	Add 50 µL of distilled water. Final antibody concentration is 1 mg/mL.
Concentration:	1 mg/mL
Buffer:	Antibody is lyophilized in PBS buffer with 2 % sucrose.
Handling Advice:	As with any antibody avoid repeat freeze-thaw cycles.
Storage:	4 °C/-20 °C
Storage Comment:	For short periods of storage (days) store at 4 °C. For longer periods of storage, store SPOPL antibody at -20 °C.

Images



Western Blotting

Image 1.