

Datasheet for ABIN2459441

anti-SCRT2 antibody[Go to Product page](#)**1** Image

Overview

Quantity:	100 µL
Target:	SCRT2
Reactivity:	Human
Host:	Rabbit
Clonality:	Polyclonal
Conjugate:	This SCRT2 antibody is un-conjugated
Application:	Western Blotting (WB), ELISA

Product Details

Immunogen:	Antibody produced in rabbits immunized with a synthetic peptide corresponding a region of human SCRT2.
Purification:	Antibody is purified by peptide affinity chromatography method.

Target Details

Target:	SCRT2
Alternative Name:	SCRT2 (SCRT2 Products)
Background:	SCRT2 belongs to the snail C2H2-type zinc-finger protein family. It contains 5 C2H2-type zinc fingers. SCRT2 may be involved in transcriptional regulation.
Molecular Weight:	32 kDa
Gene ID:	85508

Target Details

NCBI Accession: [NP_149120](#)

UniProt: [Q9NQ03](#)

Application Details

Application Notes: SCRT2 antibody can be used for detection of SCRT2 by ELISA at 1:62500. SCRT2 antibody can be used for detection of SCRT2 by western blot at 1 µg/mL, and HRP conjugated secondary antibody should be diluted 1:50,000 - 100,000.

Restrictions: For Research Use only

Handling

Format: Lyophilized

Reconstitution: Add 50 µL of distilled water. Final antibody concentration is 1 mg/mL.

Concentration: 1 mg/mL

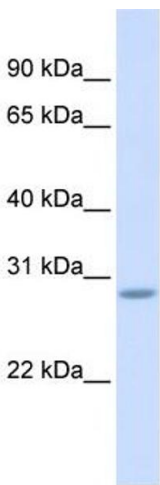
Buffer: Antibody is lyophilized in PBS buffer with 2 % sucrose.

Handling Advice: As with any antibody avoid repeat freeze-thaw cycles.

Storage: 4 °C/-20 °C

Storage Comment: For short periods of storage (days) store at 4 °C. For longer periods of storage, store SCRT2 antibody at -20 °C.

Images



Western Blotting

Image 1.