

Datasheet for ABIN2459457  
**anti-LOC732272 antibody**[Go to Product page](#)

## 1 Image

## Overview

Quantity:	100 µL
Target:	LOC732272
Reactivity:	Human
Host:	Rabbit
Clonality:	Polyclonal
Conjugate:	This LOC732272 antibody is un-conjugated
Application:	Western Blotting (WB), ELISA

## Product Details

Immunogen:	Antibody produced in rabbits immunized with a synthetic peptide corresponding a region of human LOC732272.
Purification:	Antibody is purified by peptide affinity chromatography method.

## Target Details

Target:	LOC732272
Alternative Name:	LOC732272 ( <a href="#">LOC732272 Products</a> )
Background:	The exact function of LOC732272 remains unknown.
Molecular Weight:	29 kDa
Gene ID:	732272
NCBI Accession:	<a href="#">XP_001132488</a>

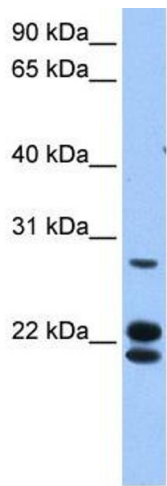
Application Details

Application Notes:	LOC732272 antibody can be used for detection of LOC732272 by ELISA at 1:1562500. LOC732272 antibody can be used for detection of LOC732272 by western blot at 1 µg/mL, and HRP conjugated secondary antibody should be diluted 1:50,000 - 100,000.
Restrictions:	For Research Use only

Handling

Format:	Lyophilized
Reconstitution:	Add 50 µL of distilled water. Final antibody concentration is 1 mg/mL.
Concentration:	1 mg/mL
Buffer:	Antibody is lyophilized in PBS buffer with 2 % sucrose.
Handling Advice:	As with any antibody avoid repeat freeze-thaw cycles.
Storage:	4 °C/-20 °C
Storage Comment:	For short periods of storage (days) store at 4 °C. For longer periods of storage, store LOC732272 antibody at -20 °C.

Images



Western Blotting

Image 1.