

Datasheet for ABIN2459473

**anti-PHF23 antibody****1** Image[Go to Product page](#)

## Overview

Quantity:	100 µL
Target:	PHF23
Reactivity:	Human, Mouse, Rat
Host:	Rabbit
Clonality:	Polyclonal
Conjugate:	This PHF23 antibody is un-conjugated
Application:	Western Blotting (WB), ELISA

## Product Details

Immunogen:	Antibody produced in rabbits immunized with a synthetic peptide corresponding a region of human PHF23.
Purification:	Antibody is purified by peptide affinity chromatography method.

## Target Details

Target:	PHF23
Alternative Name:	PHF23 ( <a href="#">PHF23 Products</a> )
Background:	PHF23 contains 1 PHD-type zinc finger. It belongs to the PHF23 family. A chromosomal aberration involving PHF23, translocation t (11,17) (p15,p13) with NUP98, is found in a patient with acute myeloid leukemia (AML).
Molecular Weight:	44 kDa
Gene ID:	79142

## Target Details

NCBI Accession: [NP\\_077273](#)

UniProt: [Q9BUL5](#)

## Application Details

Application Notes: PHF23 antibody can be used for detection of PHF23 by ELISA at 1:312500. PHF23 antibody can be used for detection of PHF23 by western blot at 1 µg/mL, and HRP conjugated secondary antibody should be diluted 1:50,000 - 100,000.

Restrictions: For Research Use only

## Handling

Format: Lyophilized

Reconstitution: Add 50 µL of distilled water. Final antibody concentration is 1 mg/mL.

Concentration: 1 mg/mL

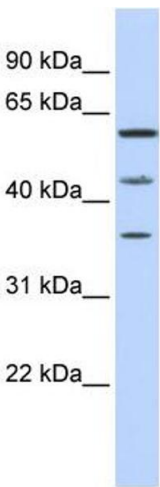
Buffer: Antibody is lyophilized in PBS buffer with 2 % sucrose.

Handling Advice: As with any antibody avoid repeat freeze-thaw cycles.

Storage: 4 °C/-20 °C

Storage Comment: For short periods of storage (days) store at 4 °C. For longer periods of storage, store PHF23 antibody at -20 °C.

## Images



### Western Blotting

Image 1.