

Datasheet for ABIN2459538

anti-ASB12 antibody[Go to Product page](#)**1** Image

Overview

Quantity:	100 µL
Target:	ASB12
Reactivity:	Human, Mouse, Rat
Host:	Rabbit
Clonality:	Polyclonal
Conjugate:	This ASB12 antibody is un-conjugated
Application:	Western Blotting (WB), ELISA

Product Details

Immunogen:	Antibody produced in rabbits immunized with a synthetic peptide corresponding a region of human ASB12.
Purification:	Antibody is purified by peptide affinity chromatography method.

Target Details

Target:	ASB12
Alternative Name:	ASB12 (ASB12 Products)
Background:	ASB12 is a member of the ankyrin repeat and SOCS box-containing (ASB) family of proteins. They contain ankyrin repeat sequence and a SOCS box domain. The SOCS box serves to couple suppressor of cytokine signalling (SOCS) proteins and their binding partners with the elongin B and C complex, possibly targeting them for degradation. The SOCS box domain has not yet been annotated for the protein. The protein encoded by this gene is a member of the ankyrin

Target Details

repeat and SOCS box-containing (ASB) family of proteins. They contain ankyrin repeat sequence and a SOCS box domain. The SOCS box serves to couple suppressor of cytokine signalling (SOCS) proteins and their binding partners with the elongin B and C complex, possibly targeting them for degradation. The SOCS box domain has not yet been annotated for this encoded protein.

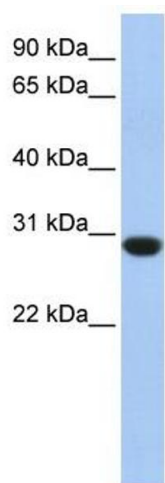
Molecular Weight:	34 kDa
Gene ID:	142689
NCBI Accession:	NP_569059
UniProt:	Q8W XK4

Application Details

Application Notes:	ASB12 antibody can be used for detection of ASB12 by ELISA at 1:1562500. ASB12 antibody can be used for detection of ASB12 by western blot at 1 µg/mL, and HRP conjugated secondary antibody should be diluted 1:50,000 - 100,000.
Restrictions:	For Research Use only

Handling

Format:	Lyophilized
Reconstitution:	Add 50 µL of distilled water. Final antibody concentration is 1 mg/mL.
Concentration:	1 mg/mL
Buffer:	Antibody is lyophilized in PBS buffer with 2 % sucrose.
Handling Advice:	As with any antibody avoid repeat freeze-thaw cycles.
Storage:	4 °C/-20 °C
Storage Comment:	For short periods of storage (days) store at 4 °C. For longer periods of storage, store ASB12 antibody at -20 °C.



Western Blotting

Image 1.