



[Go to Product page](#)

Datasheet for ABIN2459559
anti-LRRC28 antibody

1 Image

Overview

Quantity:	100 µL
Target:	LRRC28
Reactivity:	Human, Mouse, Rat
Host:	Rabbit
Clonality:	Polyclonal
Conjugate:	This LRRC28 antibody is un-conjugated
Application:	Western Blotting (WB), ELISA

Product Details

Immunogen:	Antibody produced in rabbits immunized with a synthetic peptide corresponding a region of human LRRC28.
Purification:	Antibody is purified by peptide affinity chromatography method.

Target Details

Target:	LRRC28
Alternative Name:	LRRC28 (LRRC28 Products)
Background:	LRRC28 contains 11 LRR (leucine-rich) repeats. The function of the LRRC28 protein is not known.
Molecular Weight:	42 kDa
Gene ID:	123355

Target Details

NCBI Accession: [NP_653199](#)

UniProt: [Q86X40](#)

Application Details

Application Notes: LRRC28 antibody can be used for detection of LRRC28 by ELISA at 1:312500. LRRC28 antibody can be used for detection of LRRC28 by western blot at 1 µg/mL, and HRP conjugated secondary antibody should be diluted 1:50,000 - 100,000.

Restrictions: For Research Use only

Handling

Format: Lyophilized

Reconstitution: Add 50 µL of distilled water. Final antibody concentration is 1 mg/mL.

Concentration: 1 mg/mL

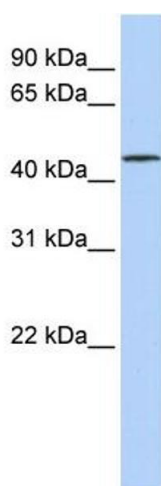
Buffer: Antibody is lyophilized in PBS buffer with 2 % sucrose.

Handling Advice: As with any antibody avoid repeat freeze-thaw cycles.

Storage: 4 °C/-20 °C

Storage Comment: For short periods of storage (days) store at 4 °C. For longer periods of storage, store LRRC28 antibody at -20 °C.

Images



Western Blotting

Image 1.