

Datasheet for ABIN2459573
anti-ARHGAP36 antibody[Go to Product page](#)

1 Image

Overview

Quantity:	100 µL
Target:	ARHGAP36
Reactivity:	Human
Host:	Rabbit
Clonality:	Polyclonal
Conjugate:	This ARHGAP36 antibody is un-conjugated
Application:	Western Blotting (WB), ELISA

Product Details

Immunogen:	Antibody produced in rabbits immunized with a synthetic peptide corresponding a region of human RP13-102H20.1.
Purification:	Antibody is purified by peptide affinity chromatography method.

Target Details

Target:	ARHGAP36
Abstract:	ARHGAP36 Products
Background:	RP13-102H20.1 is the GTPase activator for the Rho-type GTPases by converting them to an inactive GDP-bound state.
Molecular Weight:	62 kDa
Gene ID:	158763

Target Details

NCBI Accession: [NP_659404](#)

UniProt: [Q6ZRI8](#)

Application Details

Application Notes: RP13-102H20.1 antibody can be used for detection of RP13-102H20.1 by ELISA at 1:312500.
RP13-102H20.1 antibody can be used for detection of RP13-102H20.1 by western blot at 1 µg/mL, and HRP conjugated secondary antibody should be diluted 1:50,000 - 100,000.

Restrictions: For Research Use only

Handling

Format: Lyophilized

Reconstitution: Add 50 µL of distilled water. Final antibody concentration is 1 mg/mL.

Concentration: 1 mg/mL

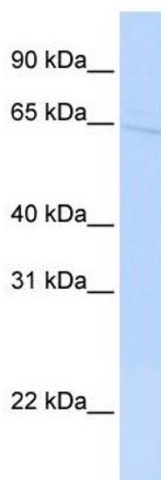
Buffer: Antibody is lyophilized in PBS buffer with 2 % sucrose.

Handling Advice: As with any antibody avoid repeat freeze-thaw cycles.

Storage: 4 °C/-20 °C

Storage Comment: For short periods of storage (days) store at 4 °C. For longer periods of storage, store RP13-102H20.1 antibody at -20 °C.

Images



Western Blotting

Image 1.