

Datasheet for ABIN2459585

**anti-SPATA5 antibody**[Go to Product page](#)**1** Image

## Overview

Quantity:	100 µL
Target:	SPATA5
Reactivity:	Human, Mouse, Rat
Host:	Rabbit
Clonality:	Polyclonal
Conjugate:	This SPATA5 antibody is un-conjugated
Application:	Western Blotting (WB), ELISA

## Product Details

Immunogen:	Antibody produced in rabbits immunized with a synthetic peptide corresponding a region of human SPATA5.
Purification:	Antibody is purified by peptide affinity chromatography method.

## Target Details

Target:	SPATA5
Alternative Name:	SPATA5 ( <a href="#">SPATA5 Products</a> )
Background:	SPATA5 may be involved in morphological and functional mitochondrial transformations during spermatogenesis.
Molecular Weight:	98 kDa
Gene ID:	166378

## Target Details

NCBI Accession: [NP\\_660208](#)

UniProt: [Q8NB90](#)

## Application Details

Application Notes: SPATA5 antibody can be used for detection of SPATA5 by ELISA at 1:62500. SPATA5 antibody can be used for detection of SPATA5 by western blot at 1 µg/mL, and HRP conjugated secondary antibody should be diluted 1:50,000 - 100,000.

Restrictions: For Research Use only

## Handling

Format: Lyophilized

Reconstitution: Add 50 µL of distilled water. Final antibody concentration is 1 mg/mL.

Concentration: 1 mg/mL

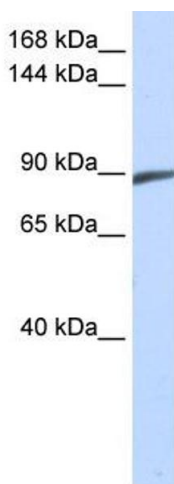
Buffer: Antibody is lyophilized in PBS buffer with 2 % sucrose.

Handling Advice: As with any antibody avoid repeat freeze-thaw cycles.

Storage: 4 °C/-20 °C

Storage Comment: For short periods of storage (days) store at 4 °C. For longer periods of storage, store SPATA5 antibody at -20 °C.

## Images



### Western Blotting

Image 1.