

Datasheet for ABIN2459606

anti-GRPEL2 antibody[Go to Product page](#)**1** Image

Overview

Quantity:	100 µL
Target:	GRPEL2
Reactivity:	Human, Mouse, Rat
Host:	Rabbit
Clonality:	Polyclonal
Conjugate:	This GRPEL2 antibody is un-conjugated
Application:	Western Blotting (WB), ELISA

Product Details

Immunogen:	Antibody produced in rabbits immunized with a synthetic peptide corresponding a region of human GRPEL2.
Purification:	Antibody is purified by peptide affinity chromatography method.

Target Details

Target:	GRPEL2
Alternative Name:	GRPEL2 (GRPEL2 Products)
Background:	GRPEL2 is an essential component of the PAM complex, a complex required for the translocation of transit peptide-containing proteins from the inner membrane into the mitochondrial matrix in an ATP-dependent manner. GRPEL2 seems to control the nucleotide-dependent binding of mitochondrial HSP70 to substrate proteins. GRPEL2 stimulates ATPase activity of mt-HSP70. GRPEL2 may also serve to modulate the interconversion of oligomeric

Target Details

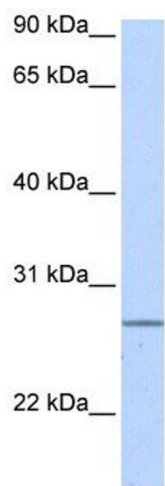
	(inactive) and monomeric (active) forms of mt-HSP70.
Molecular Weight:	25 kDa
Gene ID:	134266
NCBI Accession:	NP_689620
UniProt:	Q8TAA5

Application Details

Application Notes:	GRPEL2 antibody can be used for detection of GRPEL2 by ELISA at 1:312500. GRPEL2 antibody can be used for detection of GRPEL2 by western blot at 1 µg/mL, and HRP conjugated secondary antibody should be diluted 1:50,000 - 100,000.
Restrictions:	For Research Use only

Handling

Format:	Lyophilized
Reconstitution:	Add 50 µL of distilled water. Final antibody concentration is 1 mg/mL.
Concentration:	1 mg/mL
Buffer:	Antibody is lyophilized in PBS buffer with 2 % sucrose.
Handling Advice:	As with any antibody avoid repeat freeze-thaw cycles.
Storage:	4 °C/-20 °C
Storage Comment:	For short periods of storage (days) store at 4 °C. For longer periods of storage, store GRPEL2 antibody at -20 °C.



Western Blotting

Image 1.