

Datasheet for ABIN2459635

anti-FBXO39 antibody[Go to Product page](#)**1** Image

Overview

Quantity:	100 µL
Target:	FBXO39
Reactivity:	Human
Host:	Rabbit
Clonality:	Polyclonal
Conjugate:	This FBXO39 antibody is un-conjugated
Application:	Western Blotting (WB), ELISA

Product Details

Immunogen:	Antibody produced in rabbits immunized with a synthetic peptide corresponding a region of human FBXO39.
Purification:	Antibody is purified by peptide affinity chromatography method.

Target Details

Target:	FBXO39
Alternative Name:	FBXO39 (FBXO39 Products)
Background:	FBXO39 is a substrate-recognition component of the SCF (SKP1-CUL1-F-box protein)-type E3 ubiquitin ligase complex. Members of the F-box protein family, such as FBXO39, are characterized by an approximately 40-amino acid F-box motif. SCF complexes, formed by SKP1 (MIM 601434), cullin (see CUL1, MIM 603134), and F-box proteins, act as protein-ubiquitin ligases. F-box proteins interact with SKP1 through the F box, and they interact with

Target Details

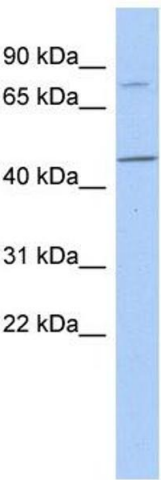
	ubiquitination targets through other protein interaction domains (Jin et al., 2004 [PubMed 15520277]).
Molecular Weight:	53 kDa
Gene ID:	162517
NCBI Accession:	NP_694962
UniProt:	Q8N4B4

Application Details

Application Notes:	FBXO39 antibody can be used for detection of FBXO39 by ELISA at 1:1562500. FBXO39 antibody can be used for detection of FBXO39 by western blot at 1 µg/mL, and HRP conjugated secondary antibody should be diluted 1:50,000 - 100,000.
Restrictions:	For Research Use only

Handling

Format:	Lyophilized
Reconstitution:	Add 50 µL of distilled water. Final antibody concentration is 1 mg/mL.
Concentration:	1 mg/mL
Buffer:	Antibody is lyophilized in PBS buffer with 2 % sucrose.
Handling Advice:	As with any antibody avoid repeat freeze-thaw cycles.
Storage:	4 °C/-20 °C
Storage Comment:	For short periods of storage (days) store at 4 °C. For longer periods of storage, store FBXO39 antibody at -20 °C.



Western Blotting

Image 1.