

Datasheet for ABIN2459639

anti-NIM1 antibody**1** Image[Go to Product page](#)

Overview

Quantity:	100 µL
Target:	NIM1
Reactivity:	Human, Mouse, Rat
Host:	Rabbit
Clonality:	Polyclonal
Conjugate:	This NIM1 antibody is un-conjugated
Application:	ELISA, Western Blotting (WB)

Product Details

Immunogen:	Antibody produced in rabbits immunized with a synthetic peptide corresponding a region of human MGC42105.
Purification:	Antibody is purified by peptide affinity chromatography method.

Target Details

Target:	NIM1
Alternative Name:	MGC42105 (NIM1 Products)
Background:	The exact functions of MGC42105 remain unknown.
Molecular Weight:	49 kDa
Gene ID:	167359
NCBI Accession:	NP_699192

Target Details

UniProt: Q8IY84

Application Details

Application Notes: MGC42105 antibody can be used for detection of MGC42105 by ELISA at 1:312500.
MGC42105 antibody can be used for detection of MGC42105 by western blot at 1 µg/mL, and HRP conjugated secondary antibody should be diluted 1:50,000 - 100,000.

Restrictions: For Research Use only

Handling

Format: Lyophilized

Reconstitution: Add 50 µL of distilled water. Final antibody concentration is 1 mg/mL.

Concentration: 1 mg/mL

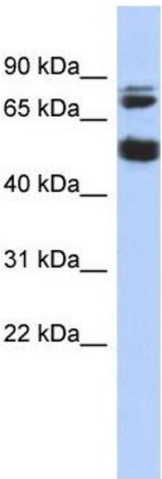
Buffer: Antibody is lyophilized in PBS buffer with 2 % sucrose.

Handling Advice: As with any antibody avoid repeat freeze-thaw cycles.

Storage: 4 °C/-20 °C

Storage Comment: For short periods of storage (days) store at 4 °C. For longer periods of storage, store MGC42105 antibody at -20 °C.

Images



Western Blotting

Image 1.