

Datasheet for ABIN2459664
anti-ASB6 antibody



[Go to Product page](#)

1 Image

Overview

Quantity:	100 µL
Target:	ASB6
Reactivity:	Human, Mouse, Rat
Host:	Rabbit
Clonality:	Polyclonal
Conjugate:	This ASB6 antibody is un-conjugated
Application:	ELISA, Western Blotting (WB)

Product Details

Immunogen:	Antibody produced in rabbits immunized with a synthetic peptide corresponding a region of human ASB6.
Purification:	Antibody is purified by peptide affinity chromatography method.

Target Details

Target:	ASB6
Alternative Name:	ASB6 (ASB6 Products)
Background:	ASB6 belongs to a family of ankyrin repeat proteins that, along with four other protein families, contain a C-terminal SOCS box motif. Growing evidence suggests that the SOCS box, similar to the F-box, acts as a bridge between specific substrate-binding domains and the more generic proteins that comprise a large family of E3 ubiquitin protein ligases. The protein encoded by this gene belongs to a family of ankyrin repeat proteins that, along with four other protein families,

Target Details

contain a C-terminal SOCS box motif. Growing evidence suggests that the SOCS box, similar to the F-box, acts as a bridge between specific substrate-binding domains and the more generic proteins that comprise a large family of E3 ubiquitin protein ligases.

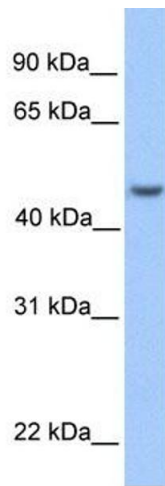
Molecular Weight:	46 kDa
Gene ID:	140459
NCBI Accession:	NP_060343
UniProt:	Q9NWX5

Application Details

Application Notes:	ASB6 antibody can be used for detection of ASB6 by ELISA at 1:1562500. ASB6 antibody can be used for detection of ASB6 by western blot at 1 µg/mL, and HRP conjugated secondary antibody should be diluted 1:50,000 - 100,000.
Restrictions:	For Research Use only

Handling

Format:	Lyophilized
Reconstitution:	Add 50 µL of distilled water. Final antibody concentration is 1 mg/mL.
Concentration:	1 mg/mL
Buffer:	Antibody is lyophilized in PBS buffer with 2 % sucrose.
Handling Advice:	As with any antibody avoid repeat freeze-thaw cycles.
Storage:	4 °C/-20 °C
Storage Comment:	For short periods of storage (days) store at 4 °C. For longer periods of storage, store ASB6 antibody at -20 °C.



Western Blotting

Image 1.