

Datasheet for ABIN2459673

anti-THAP5 antibody[Go to Product page](#)**1** Image

Overview

Quantity:	100 µL
Target:	THAP5
Reactivity:	Human
Host:	Rabbit
Clonality:	Polyclonal
Conjugate:	This THAP5 antibody is un-conjugated
Application:	Western Blotting (WB), ELISA

Product Details

Immunogen:	Antibody produced in rabbits immunized with a synthetic peptide corresponding a region of human THAP5.
Purification:	Antibody is purified by peptide affinity chromatography method.

Target Details

Target:	THAP5
Alternative Name:	THAP5 (THAP5 Products)
Background:	THAP5 contains 1 THAP-type zinc finger. The exact function of THAP5 remains unknown.
Molecular Weight:	44 kDa
Gene ID:	168451
NCBI Accession:	NP_001123947

Target Details

UniProt: [Q7Z6K1](#)

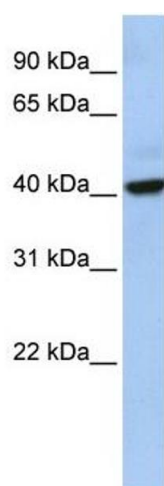
Application Details

Application Notes:	THAP5 antibody can be used for detection of THAP5 by ELISA at 1:312500. THAP5 antibody can be used for detection of THAP5 by western blot at 1 µg/mL, and HRP conjugated secondary antibody should be diluted 1:50,000 - 100,000.
Restrictions:	For Research Use only

Handling

Format:	Lyophilized
Reconstitution:	Add 50 µL of distilled water. Final antibody concentration is 1 mg/mL.
Concentration:	1 mg/mL
Buffer:	Antibody is lyophilized in PBS buffer with 2 % sucrose.
Handling Advice:	As with any antibody avoid repeat freeze-thaw cycles.
Storage:	4 °C/-20 °C
Storage Comment:	For short periods of storage (days) store at 4 °C. For longer periods of storage, store THAP5 antibody at -20 °C.

Images



Western Blotting

Image 1.