

Datasheet for ABIN2459678
anti-PHACTR3 antibody[Go to Product page](#)

1 Image

Overview

Quantity:	100 µL
Target:	PHACTR3
Reactivity:	Human, Mouse, Rat
Host:	Rabbit
Clonality:	Polyclonal
Conjugate:	This PHACTR3 antibody is un-conjugated
Application:	Western Blotting (WB), ELISA

Product Details

Immunogen:	Antibody produced in rabbits immunized with a synthetic peptide corresponding a region of human PHACTR3.
Purification:	Antibody is purified by peptide affinity chromatography method.

Target Details

Target:	PHACTR3
Alternative Name:	PHACTR3 (PHACTR3 Products)
Background:	PHACTR3 is associated with the nuclear scaffold in proliferating cells. It was found to bind to the catalytic subunit of protein phosphatase-1 (PP1) and inhibit PP1 activity, suggesting that this protein may function as a regulatory subunit of PP1. The protein encoded by this gene is associated with the nuclear scaffold in proliferating cells. It was found to bind to the catalytic subunit of protein phosphatase-1 (PP1) and inhibit PP1 activity, suggesting that this protein

Target Details

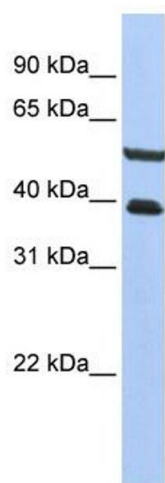
	may function as a regulatory subunit of PP1. Alternative splicing at this locus results in several transcript variants encoding different isoforms.
Molecular Weight:	51 kDa
Gene ID:	116154
NCBI Accession:	NP_899069
UniProt:	B1AN69

Application Details

Application Notes:	PHACTR3 antibody can be used for detection of PHACTR3 by ELISA at 1:12500. PHACTR3 antibody can be used for detection of PHACTR3 by western blot at 1 µg/mL, and HRP conjugated secondary antibody should be diluted 1:50,000 - 100,000.
Restrictions:	For Research Use only

Handling

Format:	Lyophilized
Reconstitution:	Add 50 µL of distilled water. Final antibody concentration is 1 mg/mL.
Concentration:	1 mg/mL
Buffer:	Antibody is lyophilized in PBS buffer with 2 % sucrose.
Handling Advice:	As with any antibody avoid repeat freeze-thaw cycles.
Storage:	4 °C/-20 °C
Storage Comment:	For short periods of storage (days) store at 4 °C. For longer periods of storage, store PHACTR3 antibody at -20 °C.



Western Blotting

Image 1.