

Datasheet for ABIN2459679

**anti-LYPD6 antibody**[Go to Product page](#)**1** Image

## Overview

Quantity:	100 µL
Target:	LYPD6
Reactivity:	Human, Mouse, Rat
Host:	Rabbit
Clonality:	Polyclonal
Conjugate:	This LYPD6 antibody is un-conjugated
Application:	Western Blotting (WB), ELISA

## Product Details

Immunogen:	Antibody produced in rabbits immunized with a synthetic peptide corresponding a region of human LYPD6.
Purification:	Antibody is purified by peptide affinity chromatography method.

## Target Details

Target:	LYPD6
Alternative Name:	LYPD6 ( <a href="#">LYPD6 Products</a> )
Background:	LYPD6 contains 1 UPAR/Ly6 domain. The exact function of LYPD6 is not known.
Molecular Weight:	19 kDa
Gene ID:	130574
NCBI Accession:	<a href="#">NP_919298</a>

## Target Details

UniProt: [Q86Y78](#)

## Application Details

Application Notes: LYPD6 antibody can be used for detection of LYPD6 by ELISA at 1:312500. LYPD6 antibody can be used for detection of LYPD6 by western blot at 1 µg/mL, and HRP conjugated secondary antibody should be diluted 1:50,000 - 100,000.

Restrictions: For Research Use only

## Handling

Format: Lyophilized

Reconstitution: Add 50 µL of distilled water. Final antibody concentration is 1 mg/mL.

Concentration: 1 mg/mL

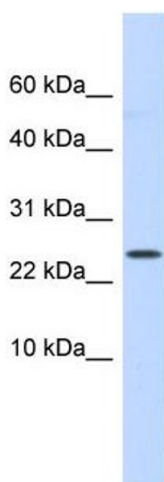
Buffer: Antibody is lyophilized in PBS buffer with 2 % sucrose.

Handling Advice: As with any antibody avoid repeat freeze-thaw cycles.

Storage: 4 °C/-20 °C

Storage Comment: For short periods of storage (days) store at 4 °C. For longer periods of storage, store LYPD6 antibody at -20 °C.

## Images



### Western Blotting

Image 1.