



Datasheet for ABIN2459764
anti-LOC285033 antibody



[Go to Product page](#)

1 Image

Overview

Quantity:	100 µL
Target:	LOC285033
Reactivity:	Human
Host:	Rabbit
Clonality:	Polyclonal
Conjugate:	This LOC285033 antibody is un-conjugated
Application:	Western Blotting (WB), ELISA

Product Details

Immunogen:	Antibody produced in rabbits immunized with a synthetic peptide corresponding a region of human LOC285033.
Purification:	Antibody is purified by peptide affinity chromatography method.

Target Details

Target:	LOC285033
Alternative Name:	LOC285033 (LOC285033 Products)
Background:	The exact function of LOC285033 remains unknown.
Molecular Weight:	13 kDa
Gene ID:	285033
NCBI Accession:	NP_001032305

Target Details

UniProt: [Q3KRF4](#)

Application Details

Application Notes: LOC285033 antibody can be used for detection of LOC285033 by ELISA at 1:62500.
LOC285033 antibody can be used for detection of LOC285033 by western blot at 1 µg/mL, and HRP conjugated secondary antibody should be diluted 1:50,000 - 100,000.

Restrictions: For Research Use only

Handling

Format: Lyophilized

Reconstitution: Add 50 µL of distilled water. Final antibody concentration is 1 mg/mL.

Concentration: 1 mg/mL

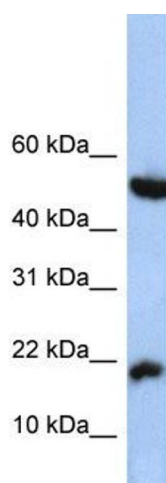
Buffer: Antibody is lyophilized in PBS buffer with 2 % sucrose.

Handling Advice: As with any antibody avoid repeat freeze-thaw cycles.

Storage: 4 °C/-20 °C

Storage Comment: For short periods of storage (days) store at 4 °C. For longer periods of storage, store LOC285033 antibody at -20 °C.

Images



Western Blotting

Image 1.