

Datasheet for ABIN2459812

anti-IPP antibody[Go to Product page](#)**1** Image

Overview

Quantity:	100 µL
Target:	IPP
Reactivity:	Human, Rat, Mouse
Host:	Rabbit
Clonality:	Polyclonal
Conjugate:	This IPP antibody is un-conjugated
Application:	ELISA, Western Blotting (WB)

Product Details

Immunogen:	Antibody produced in rabbits immunized with a synthetic peptide corresponding a region of human IPP.
Purification:	Antibody is purified by peptide affinity chromatography method.

Target Details

Target:	IPP
Alternative Name:	IPP (IPP Products)
Background:	IPP is a member of the kelch family of proteins, which is characterized by a 50 amino acid repeat which interacts with actin. The protein encoded by this gene is a member of the kelch family of proteins, which is characterized by a 50 amino acid repeat which interacts with actin. Transcript variants have been described but their full-length nature has not been determined.
Molecular Weight:	65 kDa

Target Details

Gene ID:	3652
NCBI Accession:	NP_005888
UniProt:	Q9Y573

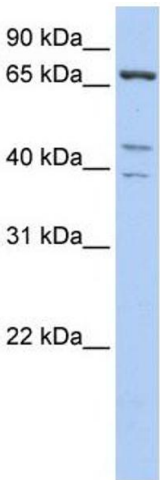
Application Details

Application Notes:	IPP antibody can be used for detection of IPP by ELISA at 1:1562500. IPP antibody can be used for detection of IPP by western blot at 1 µg/mL, and HRP conjugated secondary antibody should be diluted 1:50,000 - 100,000.
Restrictions:	For Research Use only

Handling

Format:	Lyophilized
Reconstitution:	Add 50 µL of distilled water. Final antibody concentration is 1 mg/mL.
Concentration:	1 mg/mL
Buffer:	Antibody is lyophilized in PBS buffer with 2 % sucrose.
Handling Advice:	As with any antibody avoid repeat freeze-thaw cycles.
Storage:	4 °C/-20 °C
Storage Comment:	For short periods of storage (days) store at 4 °C. For longer periods of storage, store IPP antibody at -20 °C.

Images



Western Blotting

Image 1.