



[Go to Product page](#)

Datasheet for ABIN2459926
anti-TMEM146 antibody

1 Image

Overview

Quantity:	100 µL
Target:	TMEM146
Reactivity:	Human
Host:	Rabbit
Clonality:	Polyclonal
Conjugate:	This TMEM146 antibody is un-conjugated
Application:	Western Blotting (WB), ELISA

Product Details

Immunogen:	Antibody produced in rabbits immunized with a synthetic peptide corresponding a region of human TMEM146.
Purification:	Antibody is purified by peptide affinity chromatography method.

Target Details

Target:	TMEM146
Alternative Name:	TMEM146 (TMEM146 Products)
Background:	TMEM146 is a single-pass type I membrane protein. The functions of TMEM146 remain unknown.
Molecular Weight:	90 kDa
Gene ID:	257062

Target Details

NCBI Accession: [NP_689997](#)

UniProt: [Q86XM0](#)

Application Details

Application Notes: TMEM146 antibody can be used for detection of TMEM146 by ELISA at 1:1562500. TMEM146 antibody can be used for detection of TMEM146 by western blot at 1 µg/mL, and HRP conjugated secondary antibody should be diluted 1:50,000 - 100,000.

Restrictions: For Research Use only

Handling

Format: Lyophilized

Reconstitution: Add 50 µL of distilled water. Final antibody concentration is 1 mg/mL.

Concentration: 1 mg/mL

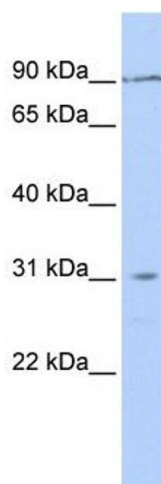
Buffer: Antibody is lyophilized in PBS buffer with 2 % sucrose.

Handling Advice: As with any antibody avoid repeat freeze-thaw cycles.

Storage: 4 °C/-20 °C

Storage Comment: For short periods of storage (days) store at 4 °C. For longer periods of storage, store TMEM146 antibody at -20 °C.

Images



Western Blotting

Image 1.