

Datasheet for ABIN2459934

**anti-EML3 antibody**[Go to Product page](#)**1** Image

## Overview

Quantity:	100 µL
Target:	EML3
Reactivity:	Human, Mouse
Host:	Rabbit
Clonality:	Polyclonal
Conjugate:	This EML3 antibody is un-conjugated
Application:	Western Blotting (WB), ELISA

## Product Details

Immunogen:	Antibody produced in rabbits immunized with a synthetic peptide corresponding a region of human EML3.
Purification:	Antibody is purified by peptide affinity chromatography method.

## Target Details

Target:	EML3
Alternative Name:	EML3 ( <a href="#">EML3 Products</a> )
Background:	EML3 may modify the assembly dynamics of microtubules, such that microtubules are slightly longer, but more dynamic.
Molecular Weight:	95 kDa
Gene ID:	256364

### Target Details

NCBI Accession: [NP\\_694997](#)

UniProt: [Q32P44](#)

### Application Details

Application Notes: EML3 antibody can be used for detection of EML3 by ELISA at 1:312500. EML3 antibody can be used for detection of EML3 by western blot at 1 µg/mL, and HRP conjugated secondary antibody should be diluted 1:50,000 - 100,000.

Restrictions: For Research Use only

### Handling

Format: Lyophilized

Reconstitution: Add 50 µL of distilled water. Final antibody concentration is 1 mg/mL.

Concentration: 1 mg/mL

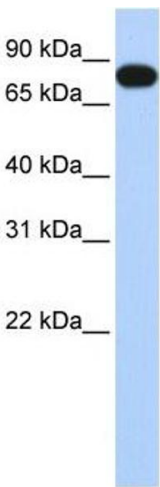
Buffer: Antibody is lyophilized in PBS buffer with 2 % sucrose.

Handling Advice: As with any antibody avoid repeat freeze-thaw cycles.

Storage: 4 °C/-20 °C

Storage Comment: For short periods of storage (days) store at 4 °C. For longer periods of storage, store EML3 antibody at -20 °C.

### Images



#### Western Blotting

Image 1.