

Datasheet for ABIN2459949  
**anti-RGS6 antibody**



[Go to Product page](#)

1 Image

### Overview

Quantity:	100 µL
Target:	RGS6
Reactivity:	Human, Rat, Mouse, Dog
Host:	Rabbit
Clonality:	Polyclonal
Conjugate:	This RGS6 antibody is un-conjugated
Application:	Western Blotting (WB), ELISA, Immunohistochemistry (IHC)

### Product Details

Immunogen:	Antibody produced in rabbits immunized with a synthetic peptide corresponding a region of human RGS6.
Purification:	Antibody is purified by peptide affinity chromatography method.

### Target Details

Target:	RGS6
Alternative Name:	RGS6 ( <a href="#">RGS6 Products</a> )
Background:	Members of the RGS (regulator of G protein signaling) family have been shown to modulate the functioning of G proteins by activating the intrinsic GTPase activity of the alpha (guanine nucleotide-binding) subunits.
Molecular Weight:	54 kDa
Gene ID:	283417

## Target Details

NCBI Accession: [NP\\_004287](#)

Pathways: [Myometrial Relaxation and Contraction, Regulation of G-Protein Coupled Receptor Protein Signaling](#)

## Application Details

Application Notes: RGS6 antibody can be used for detection of RGS6 by ELISA at 1:12500. RGS6 antibody can be used for detection of RGS6 by western blot at 2.0 µg/mL, and HRP conjugated secondary antibody should be diluted 1:50,000 - 100,000.

Restrictions: For Research Use only

## Handling

Format: Lyophilized

Reconstitution: Add 50 µL of distilled water. Final antibody concentration is 1 mg/mL.

Concentration: 1 mg/mL

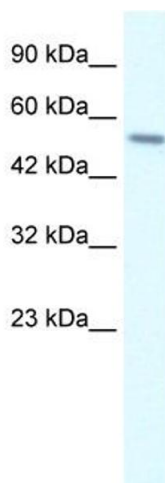
Buffer: Antibody is lyophilized in PBS buffer with 2 % sucrose.

Handling Advice: As with any antibody avoid repeat freeze-thaw cycles.

Storage: 4 °C/-20 °C

Storage Comment: For short periods of storage (days) store at 4 °C. For longer periods of storage, store RGS6 antibody at -20 °C.

## Images



### Western Blotting

Image 1.