

Datasheet for ABIN2459954

anti-ARL5A antibody[Go to Product page](#)**1** Image

Overview

Quantity:	100 µL
Target:	ARL5A
Reactivity:	Human, Mouse, Rat
Host:	Rabbit
Clonality:	Polyclonal
Conjugate:	This ARL5A antibody is un-conjugated
Application:	Western Blotting (WB), ELISA

Product Details

Immunogen:	Antibody produced in rabbits immunized with a synthetic peptide corresponding a region of human ARL5A.
Purification:	Antibody is purified by peptide affinity chromatography method.

Target Details

Target:	ARL5A
Alternative Name:	ARL5A (ARL5A Products)
Background:	ARL5A lacks ADP-ribosylation enhancing activity. The protein encoded by this gene belongs to the ARF family of GTP-binding proteins. With its distinctive nuclear/nucleolar localization and interaction with HP1alpha, the protein is developmentally regulated and may play a role (s) in nuclear dynamics and/or signaling cascades during embryonic development. Alternative splicing results in multiple transcript variants encoding different isoforms. This gene has

Target Details

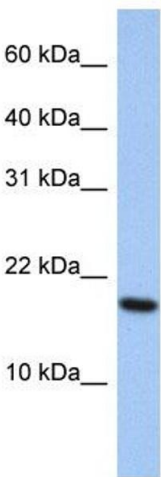
	multiple pseudogenes.
Molecular Weight:	20 kDa
Gene ID:	26225
NCBI Accession:	NP_036229
UniProt:	Q9Y689

Application Details

Application Notes:	ARL5A antibody can be used for detection of ARL5A by ELISA at 1:62500. ARL5A antibody can be used for detection of ARL5A by western blot at 1 µg/mL, and HRP conjugated secondary antibody should be diluted 1:50,000 - 100,000.
Restrictions:	For Research Use only

Handling

Format:	Lyophilized
Reconstitution:	Add 50 µL of distilled water. Final antibody concentration is 1 mg/mL.
Concentration:	1 mg/mL
Buffer:	Antibody is lyophilized in PBS buffer with 2 % sucrose.
Handling Advice:	As with any antibody avoid repeat freeze-thaw cycles.
Storage:	4 °C/-20 °C
Storage Comment:	For short periods of storage (days) store at 4 °C. For longer periods of storage, store ARL5A antibody at -20 °C.



Western Blotting

Image 1.