



Datasheet for ABIN2460094 anti-WDR3 antibody



[Go to Product page](#)

1 Image

Overview

Quantity:	100 µL
Target:	WDR3
Reactivity:	Human
Host:	Rabbit
Clonality:	Polyclonal
Conjugate:	This WDR3 antibody is un-conjugated
Application:	Western Blotting (WB), ELISA

Product Details

Immunogen:	Antibody produced in rabbits immunized with a synthetic peptide corresponding a region of human WDR3.
Purification:	Antibody is purified by peptide affinity chromatography method.

Target Details

Target:	WDR3
Alternative Name:	WDR3 (WDR3 Products)
Background:	WDR3 is a nuclear protein containing 10 WD repeats. WD repeats are approximately 30- to 40-amino acid domains containing several conserved residues, which usually include a trp-asn at the C-terminal end. Proteins belonging to the WD repeat family are involved in a variety of cellular processes, including cell cycle progression, signal transduction, apoptosis, and gene regulation. This gene encodes a nuclear protein containing 10 WD repeats. WD repeats are

Target Details

approximately 30- to 40-amino acid domains containing several conserved residues, which usually include a trp-asp at the C-terminal end. Proteins belonging to the WD repeat family are involved in a variety of cellular processes, including cell cycle progression, signal transduction, apoptosis, and gene regulation.

Molecular Weight: 106 kDa

Gene ID: 10885

NCBI Accession: [NP_006775](#)

UniProt: [Q9UNX4](#)

Application Details

Application Notes: WDR3 antibody can be used for detection of WDR3 by ELISA at 1:1562500. WDR3 antibody can be used for detection of WDR3 by western blot at 1 µg/mL, and HRP conjugated secondary antibody should be diluted 1:50,000 - 100,000.

Restrictions: For Research Use only

Handling

Format: Lyophilized

Reconstitution: Add 50 µL of distilled water. Final antibody concentration is 1 mg/mL.

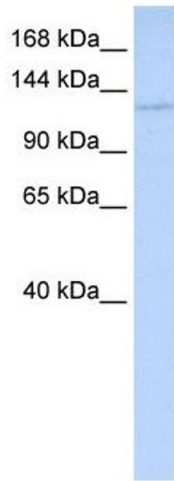
Concentration: 1 mg/mL

Buffer: Antibody is lyophilized in PBS buffer with 2 % sucrose.

Handling Advice: As with any antibody avoid repeat freeze-thaw cycles.

Storage: 4 °C/-20 °C

Storage Comment: For short periods of storage (days) store at 4 °C. For longer periods of storage, store WDR3 antibody at -20 °C.



Western Blotting

Image 1.