

Datasheet for ABIN2460145

anti-TOX2 antibody[Go to Product page](#)**1** Image

Overview

Quantity:	100 µL
Target:	TOX2
Reactivity:	Human, Mouse, Rat, Dog
Host:	Rabbit
Clonality:	Polyclonal
Conjugate:	This TOX2 antibody is un-conjugated
Application:	Western Blotting (WB), ELISA, Immunohistochemistry (IHC)

Product Details

Immunogen:	Antibody produced in rabbits immunized with a synthetic peptide corresponding a region of human C20orf100.
Purification:	Antibody is purified by peptide affinity chromatography method.

Target Details

Target:	TOX2
Alternative Name:	C20orf100 (TOX2 Products)
Background:	This gene, which is located on chromosome 20, is predicted to encode for a signal protein with unknown function.
Molecular Weight:	49 kDa
Gene ID:	84969

Target Details

NCBI Accession: [NP_116272](#)

UniProt: [Q96NM4](#)

Application Details

Application Notes: C20orf100 antibody can be used for detection of C20orf100 by ELISA at 1:312500. C20orf100 antibody can be used for detection of C20orf100 by western blot at 0.5 µg/mL, and HRP conjugated secondary antibody should be diluted 1:50,000 - 100,000.

Restrictions: For Research Use only

Handling

Format: Lyophilized

Reconstitution: Add 50 µL of distilled water. Final antibody concentration is 1 mg/mL.

Concentration: 1 mg/mL

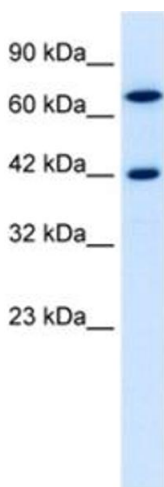
Buffer: Antibody is lyophilized in PBS buffer with 2 % sucrose.

Handling Advice: As with any antibody avoid repeat freeze-thaw cycles.

Storage: 4 °C/-20 °C

Storage Comment: For short periods of storage (days) store at 4 °C. For longer periods of storage, store C20orf100 antibody at -20 °C.

Images



Western Blotting

Image 1.