

Datasheet for ABIN2460204  
**anti-KLF9 antibody**



[Go to Product page](#)

1 Image

## Overview

Quantity:	100 µL
Target:	KLF9
Reactivity:	Human, Mouse, Rat
Host:	Rabbit
Clonality:	Polyclonal
Conjugate:	This KLF9 antibody is un-conjugated
Application:	Western Blotting (WB), ELISA

## Product Details

Immunogen:	Antibody produced in rabbits immunized with a synthetic peptide corresponding a region of human KLF9.
Purification:	Antibody is purified by peptide affinity chromatography method.

## Target Details

Target:	KLF9
Alternative Name:	KLF9 ( <a href="#">KLF9 Products</a> )
Background:	KLF9 is a transcription factor that binds to GC box elements located in the promoter. Binding of the encoded protein to a single GC box inhibits mRNA expression while binding to tandemly repeated GC box elements activates transcription. The protein encoded by this gene is a transcription factor that binds to GC box elements located in the promoter. Binding of the encoded protein to a single GC box inhibits mRNA expression while binding to tandemly

## Target Details

repeated GC box elements activates transcription. Publication Note: This RefSeq record includes a subset of the publications that are available for this gene. Please see the Entrez Gene record to access additional publications.

Molecular Weight: 27 kDa

Gene ID: 687

NCBI Accession: [NP\\_001197](#)

UniProt: [Q13886](#)

Pathways: [Intracellular Steroid Hormone Receptor Signaling Pathway](#)

## Application Details

Application Notes: KLF9 antibody can be used for detection of KLF9 by ELISA at 1:62500. KLF9 antibody can be used for detection of KLF9 by western blot at 1 µg/mL, and HRP conjugated secondary antibody should be diluted 1:50,000 - 100,000.

Restrictions: For Research Use only

## Handling

Format: Lyophilized

Reconstitution: Add 50 µL of distilled water. Final antibody concentration is 1 mg/mL.

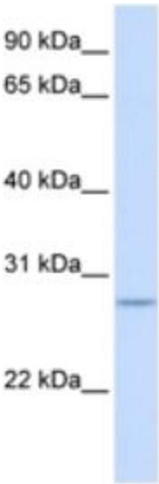
Concentration: 1 mg/mL

Buffer: Antibody is lyophilized in PBS buffer with 2 % sucrose.

Handling Advice: As with any antibody avoid repeat freeze-thaw cycles.

Storage: 4 °C/-20 °C

Storage Comment: For short periods of storage (days) store at 4 °C. For longer periods of storage, store KLF9 antibody at -20 °C.



**Western Blotting**

**Image 1.**