

Datasheet for ABIN2460205  
**anti-EN2 antibody**



[Go to Product page](#)

1 Image

## Overview

Quantity:	100 µL
Target:	EN2
Reactivity:	Human, Mouse, Rat
Host:	Rabbit
Clonality:	Polyclonal
Conjugate:	This EN2 antibody is un-conjugated
Application:	Western Blotting (WB), ELISA

## Product Details

Immunogen:	Antibody produced in rabbits immunized with a synthetic peptide corresponding a region of human EN2.
Purification:	Antibody is purified by peptide affinity chromatography method.

## Target Details

Target:	EN2
Alternative Name:	EN2 ( <a href="#">EN2 Products</a> )
Background:	Homeobox-containing genes are thought to have a role in controlling development. The human engrailed homologs 1 and 2 encode homeodomain-containing proteins and have been implicated in the control of pattern formation during development of the central nervous system. Homeobox-containing genes are thought to have a role in controlling development. In Drosophila, the 'engrailed' (en) gene plays an important role during development in

## Target Details

segmentation, where it is required for the formation of posterior compartments. Different mutations in the mouse homologs, En1 and En2, produced different developmental defects that frequently are lethal. The human engrailed homologs 1 and 2 encode homeodomain-containing proteins and have been implicated in the control of pattern formation during development of the central nervous system. Publication Note: This RefSeq record includes a subset of the publications that are available for this gene. Please see the Entrez Gene record to access additional publications.

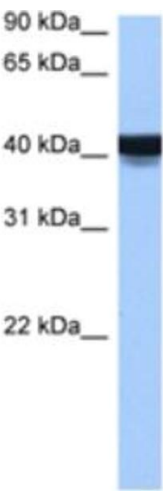
Molecular Weight:	34 kDa
Gene ID:	2020
NCBI Accession:	<a href="#">NP_001418</a>
UniProt:	<a href="#">P19622</a>

## Application Details

Application Notes:	EN2 antibody can be used for detection of EN2 by ELISA at 1:62500. EN2 antibody can be used for detection of EN2 by western blot at 0.5 µg/mL, and HRP conjugated secondary antibody should be diluted 1:50,000 - 100,000.
Restrictions:	For Research Use only

## Handling

Format:	Lyophilized
Reconstitution:	Add 50 µL of distilled water. Final antibody concentration is 1 mg/mL.
Concentration:	1 mg/mL
Buffer:	Antibody is lyophilized in PBS buffer with 2 % sucrose.
Handling Advice:	As with any antibody avoid repeat freeze-thaw cycles.
Storage:	4 °C/-20 °C
Storage Comment:	For short periods of storage (days) store at 4 °C. For longer periods of storage, store EN2 antibody at -20 °C.



**Western Blotting**

**Image 1.**