

Datasheet for ABIN2460211 **anti-MSX1 antibody**

[Go to Product page](#)

1 Image

Overview

Quantity:	100 µL
Target:	MSX1
Reactivity:	Human, Dog
Host:	Rabbit
Clonality:	Polyclonal
Conjugate:	This MSX1 antibody is un-conjugated
Application:	Western Blotting (WB), ELISA, Immunohistochemistry (IHC)

Product Details

Immunogen:	Antibody produced in rabbits immunized with a synthetic peptide corresponding a region of human MSX1.
Purification:	Antibody is purified by protein A chromatography method.

Target Details

Target:	MSX1
Alternative Name:	MSX1 (MSX1 Products)
Background:	Slightly proximal to the Huntington disease locus, the human MSX1 gene is deleted in patients with Wolf-Hirschhorn syndrome. This gene is also called HOX7. The Msx family of vertebrate HOX genes was originally isolated by homology to the Drosophila msh (muscle segment homeo box) gene. This is a candidate gene for human cleft palate.
Molecular Weight:	31 kDa

Target Details

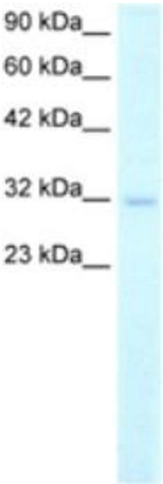
Gene ID:	4487
NCBI Accession:	NP_002439
UniProt:	P28360
Pathways:	Regulation of Muscle Cell Differentiation , Positive Regulation of Response to DNA Damage Stimulus

Application Details

Application Notes:	MSX1 antibody can be used for detection of MSX1 by ELISA at 1:62500. MSX1 antibody can be used for detection of MSX1 by western blot at 2.0 µg/mL, and HRP conjugated secondary antibody should be diluted 1:50,000 - 100,000.
Restrictions:	For Research Use only

Handling

Format:	Lyophilized
Reconstitution:	Add 100 µL of distilled water. Final antibody concentration is 1 mg/mL.
Concentration:	1 mg/mL
Buffer:	Antibody is lyophilized in PBS buffer with 2 % sucrose.
Handling Advice:	As with any antibody avoid repeat freeze-thaw cycles.
Storage:	4 °C/-20 °C
Storage Comment:	For short periods of storage (days) store at 4 °C. For longer periods of storage, store MSX1 antibody at -20 °C.



Western Blotting

Image 1.