

Datasheet for ABIN2460233

**anti-SLC30A9 antibody**[Go to Product page](#)**1** Image

## Overview

Quantity:	100 µL
Target:	SLC30A9
Reactivity:	Human, Rat, Dog
Host:	Rabbit
Clonality:	Polyclonal
Conjugate:	This SLC30A9 antibody is un-conjugated
Application:	Western Blotting (WB), ELISA, Immunohistochemistry (IHC)

## Product Details

Immunogen:	Antibody produced in rabbits immunized with a synthetic peptide corresponding a region of human SLC30A9.
Purification:	Antibody is purified by peptide affinity chromatography method.

## Target Details

Target:	SLC30A9
Alternative Name:	SLC30A9 ( <a href="#">SLC30A9 Products</a> )
Background:	The gene corresponding to embryonic lung protein [also known as Solute carrier family 30 (Zinc transporter), member 9, SLC30A9], is likely to be an evolutionarily conserved, housekeeping gene that plays a role intimately linked with cellular replication, DNA synthesis and/or transcriptional regulation.
Molecular Weight:	63 kDa

## Target Details

Gene ID:	10463
NCBI Accession:	<a href="#">NP_006336</a>
UniProt:	<a href="#">Q9Y6R2</a>
Pathways:	<a href="#">SARS-CoV-2 Protein Interactome</a>

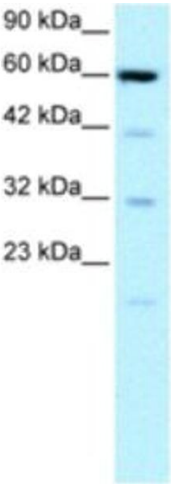
## Application Details

Application Notes: SLC30A9 antibody can be used for detection of SLC30A9 by ELISA at 1:62500. SLC30A9 antibody can be used for detection of SLC30A9 by western blot at 0.5-2.0 µg/mL, and HRP conjugated secondary antibody should be diluted 1:50,000 - 100,000.

Restrictions: For Research Use only

## Handling

Format:	Lyophilized
Reconstitution:	Add 50 µL of distilled water. Final antibody concentration is 1 mg/mL.
Concentration:	1 mg/mL
Buffer:	Antibody is lyophilized in PBS buffer with 2 % sucrose.
Handling Advice:	As with any antibody avoid repeat freeze-thaw cycles.
Storage:	4 °C/-20 °C
Storage Comment:	For short periods of storage (days) store at 4 °C. For longer periods of storage, store SLC30A9 antibody at -20 °C.



**Western Blotting**

**Image 1.**