

Datasheet for ABIN2460240

anti-STON1 antibody[Go to Product page](#)**1** Image

Overview

Quantity:	100 µL
Target:	STON1
Reactivity:	Human, Dog, Mouse
Host:	Rabbit
Clonality:	Polyclonal
Conjugate:	This STON1 antibody is un-conjugated
Application:	Western Blotting (WB), ELISA

Product Details

Immunogen:	Antibody produced in rabbits immunized with a synthetic peptide corresponding a region of human SALF.
------------	---

Target Details

Target:	STON1
Alternative Name:	SALF (STON1 Products)
Background:	The SALF mRNA is an infrequent but naturally occurring co-transcribed product of the neighboring SBLF and ALF genes. This rare transcript encodes a fusion protein composed of greater than 95% each of the individual elements, stoned B-like factor (SBLF) and TFIIA-alpha/beta-like factor (ALF). The significance of this co-transcribed mRNA and the function of its protein product have not yet been determined.
Molecular Weight:	132 kDa, 52 kDa, 50 kDa

Target Details

Gene ID:	286749
NCBI Accession:	NP_758515
UniProt:	Q9Y6Q2

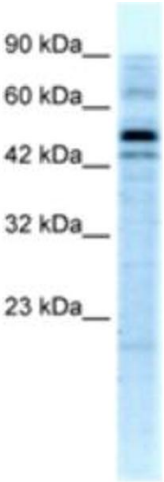
Application Details

Application Notes:	SALF antibody can be used for detection of SALF by ELISA at 1:62500. SALF antibody can be used for detection of SALF by western blot at 5 µg/mL, and HRP conjugated secondary antibody should be diluted 1:50,000 - 100,000.
Restrictions:	For Research Use only

Handling

Format:	Lyophilized
Reconstitution:	Add 100 µL of distilled water. Final antibody concentration is 1 mg/mL.
Concentration:	1 mg/mL
Buffer:	Antibody is lyophilized in PBS buffer with 2 % sucrose.
Handling Advice:	As with any antibody avoid repeat freeze-thaw cycles.
Storage:	4 °C/-20 °C
Storage Comment:	For short periods of storage (days) store at 4 °C. For longer periods of storage, store SALF antibody at -20 °C.

Images



Western Blotting

Image 1.