

Datasheet for ABIN2460254

anti-EBF1 antibody[Go to Product page](#)**1** Image

Overview

Quantity:	100 µL
Target:	EBF1
Reactivity:	Human, Mouse, Rat, Drosophila melanogaster, C. elegans
Host:	Rabbit
Clonality:	Polyclonal
Conjugate:	This EBF1 antibody is un-conjugated
Application:	Western Blotting (WB), ELISA

Product Details

Immunogen:	Antibody produced in rabbits immunized with a synthetic peptide corresponding a region of human EBF1.
Purification:	Antibody is purified by peptide affinity chromatography method.

Target Details

Target:	EBF1
Alternative Name:	EBF1 (EBF1 Products)
Background:	EBF1 belongs to the COE family. It contains 1 IPT/TIG domain. EBF1 is a transcriptional activator which recognizes variations of the palindromic sequence 5'-ATTCCCNNGGGAATT-3'.
Molecular Weight:	64 kDa
Gene ID:	1879

Target Details

NCBI Accession: [NP_076870](#)

UniProt: [Q9UH73](#)

Application Details

Application Notes: EBF1 antibody can be used for detection of EBF1 by ELISA at 1:312500. EBF1 antibody can be used for detection of EBF1 by western blot at 1 µg/mL, and HRP conjugated secondary antibody should be diluted 1:50,000 - 100,000.

Restrictions: For Research Use only

Handling

Format: Lyophilized

Reconstitution: Add 50 µL of distilled water. Final antibody concentration is 1 mg/mL.

Concentration: 1 mg/mL

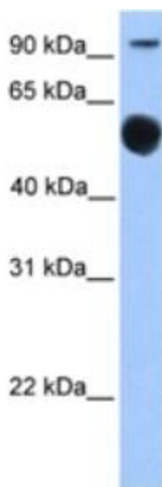
Buffer: Antibody is lyophilized in PBS buffer with 2 % sucrose.

Handling Advice: As with any antibody avoid repeat freeze-thaw cycles.

Storage: 4 °C/-20 °C

Storage Comment: For short periods of storage (days) store at 4 °C. For longer periods of storage, store EBF1 antibody at -20 °C.

Images



Western Blotting

Image 1.