

Datasheet for ABIN2460258

**anti-ELF2 antibody**[Go to Product page](#)**1** Image

## Overview

Quantity:	100 µL
Target:	ELF2
Reactivity:	Human, Mouse, Rat, Dog
Host:	Rabbit
Clonality:	Polyclonal
Conjugate:	This ELF2 antibody is un-conjugated
Application:	Western Blotting (WB), ELISA

## Product Details

Immunogen:	Antibody produced in rabbits immunized with a synthetic peptide corresponding a region of human ELF2.
Purification:	Antibody is purified by peptide affinity chromatography method.

## Target Details

Target:	ELF2
Alternative Name:	ELF2 ( <a href="#">ELF2 Products</a> )
Background:	The ELF2 gene encodes a protein that physically interacts with AML1 and mediates opposing effects on AML1-mediated transcription of the B cell-specific blk gene.
Molecular Weight:	57 kDa
Gene ID:	1998

Target Details

NCBI Accession: [NP\\_006865](#)

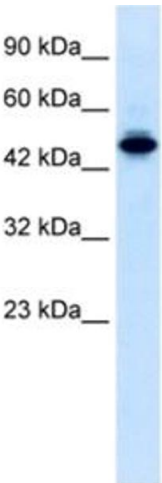
Application Details

Application Notes:	ELF2 antibody can be used for detection of ELF2 by ELISA at 1:12500. ELF2 antibody can be used for detection of ELF2 by western blot at 0.5 µg/mL, and HRP conjugated secondary antibody should be diluted 1:50,000 - 100,000.
Restrictions:	For Research Use only

Handling

Format:	Lyophilized
Reconstitution:	Add 50 µL of distilled water. Final antibody concentration is 1 mg/mL.
Concentration:	1 mg/mL
Buffer:	Antibody is lyophilized in PBS buffer with 2 % sucrose.
Handling Advice:	As with any antibody avoid repeat freeze-thaw cycles.
Storage:	4 °C/-20 °C
Storage Comment:	For short periods of storage (days) store at 4 °C. For longer periods of storage, store ELF2 antibody at -20 °C.

Images



**Western Blotting**

**Image 1.**