

Datasheet for ABIN2460293
anti-ZNF385A antibody



[Go to Product page](#)

1 Image

Overview

Quantity:	100 µL
Target:	ZNF385A
Reactivity:	Human, Mouse, Rat, Zebrafish (Danio rerio)
Host:	Rabbit
Clonality:	Polyclonal
Conjugate:	This ZNF385A antibody is un-conjugated
Application:	Western Blotting (WB), ELISA, Immunohistochemistry (IHC)

Product Details

Immunogen:	Antibody produced in rabbits immunized with a synthetic peptide corresponding a region of human ZNF385.
Purification:	Antibody is purified by peptide affinity chromatography method.

Target Details

Target:	ZNF385A
Alternative Name:	ZNF385 (ZNF385A Products)
Background:	Results suggest that RZF is a shuttling regulatory protein expressed in photoreceptors of the human retina that may be involved in mRNA or protein regulation of photoreceptor-specific genes and therefore have role in retinal disease mechanisms.
Molecular Weight:	38 kDa
Gene ID:	25946

Target Details

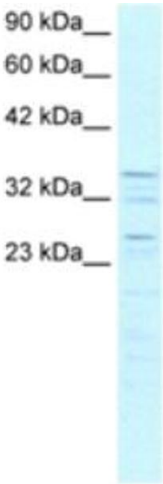
NCBI Accession:	NP_056296
UniProt:	Q96PM9
Pathways:	Positive Regulation of Response to DNA Damage Stimulus , Negative Regulation of intrinsic apoptotic Signaling , Positive Regulation of fat Cell Differentiation

Application Details

Application Notes:	ZNF385 antibody can be used for detection of ZNF385 by ELISA at 1:312500. ZNF385 antibody can be used for detection of ZNF385 by western blot at 1.0 µg/mL, and HRP conjugated secondary antibody should be diluted 1:50,000 - 100,000.
Restrictions:	For Research Use only

Handling

Format:	Lyophilized
Reconstitution:	Add 50 µL of distilled water. Final antibody concentration is 1 mg/mL.
Concentration:	1 mg/mL
Buffer:	Antibody is lyophilized in PBS buffer with 2 % sucrose.
Handling Advice:	As with any antibody avoid repeat freeze-thaw cycles.
Storage:	4 °C/-20 °C
Storage Comment:	For short periods of storage (days) store at 4 °C. For longer periods of storage, store ZNF385 antibody at -20 °C.



Western Blotting

Image 1.