



[Go to Product page](#)

Datasheet for ABIN2460300

anti-EHF antibody

1 Image

Overview

Quantity:	100 µL
Target:	EHF
Reactivity:	Human, Dog
Host:	Rabbit
Clonality:	Polyclonal
Conjugate:	This EHF antibody is un-conjugated
Application:	Western Blotting (WB), Immunohistochemistry (IHC), ELISA

Product Details

Immunogen:	Antibody produced in rabbits immunized with a synthetic peptide corresponding a region of human EHF.
Purification:	Antibody is purified by protein A chromatography method.

Target Details

Target:	EHF
Alternative Name:	EHF (EHF Products)
Background:	EHF belongs to an ETS transcription factor subfamily characterized by epithelial-specific expression (ESEs). The encoded protein acts as a transcriptional repressor and may be associated with asthma susceptibility. This protein may be involved in epithelial differentiation and carcinogenesis.
Molecular Weight:	35 kDa

Target Details

Gene ID: 26298

NCBI Accession: [NP_036285](#)

UniProt: [Q9NZC4](#)

Application Details

Application Notes: EHF antibody can be used for detection of EHF by ELISA at 1:62500. EHF antibody can be used for detection of EHF by western blot at 1.25 µg/mL, and HRP conjugated secondary antibody should be diluted 1:50,000 - 100,000.

Restrictions: For Research Use only

Handling

Format: Lyophilized

Reconstitution: Add 100 µL of distilled water. Final antibody concentration is 1 mg/mL.

Concentration: 1 mg/mL

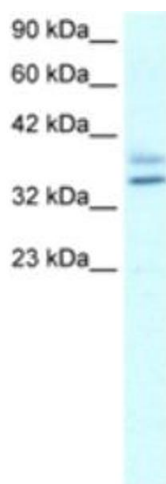
Buffer: Antibody is lyophilized in PBS buffer with 2 % sucrose.

Handling Advice: As with any antibody avoid repeat freeze-thaw cycles.

Storage: 4 °C/-20 °C

Storage Comment: For short periods of storage (days) store at 4 °C. For longer periods of storage, store EHF antibody at -20 °C.

Images



Western Blotting

Image 1.