

Datasheet for ABIN2460304
anti-GFI1 antibody



[Go to Product page](#)

1 Image

Overview

Quantity:	100 µL
Target:	GFI1
Reactivity:	Human, Rat, Mouse, Dog
Host:	Rabbit
Clonality:	Polyclonal
Conjugate:	This GFI1 antibody is un-conjugated
Application:	Western Blotting (WB), ELISA

Product Details

Immunogen:	Antibody produced in rabbits immunized with a synthetic peptide corresponding a region of human GFI1.
Purification:	Antibody is purified by peptide affinity chromatography method.

Target Details

Target:	GFI1
Alternative Name:	GFI1 (GFI1 Products)
Background:	<p>GFI1 may be a transcription factor involved in regulating the expression of genes active in the S phase during cell cycle progression in T-cells. GFI1 may be involved in tumor progression.</p> <p>Defects in GFI1 are a cause of autosomal dominant severe congenital neutropenia (SCN) and dominant nonimmune chronic idiopathic neutropenia of adults (NI-CINA)</p>
Molecular Weight:	46 kDa

Target Details

Gene ID:	2672
NCBI Accession:	NP_005254
UniProt:	Q99684

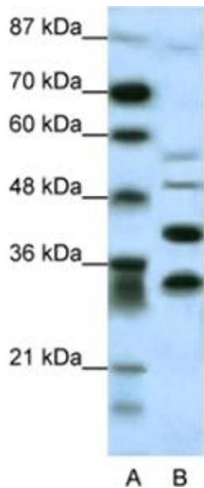
Application Details

Application Notes:	GF11 antibody can be used for detection of GF11 by ELISA at 1:312500. GF11 antibody can be used for detection of GF11 by western blot at 0.25 µg/mL, and HRP conjugated secondary antibody should be diluted 1:50,000 - 100,000.
Restrictions:	For Research Use only

Handling

Format:	Lyophilized
Reconstitution:	Add 50 µL of distilled water. Final antibody concentration is 1 mg/mL.
Concentration:	1 mg/mL
Buffer:	Antibody is lyophilized in PBS buffer with 2 % sucrose.
Handling Advice:	As with any antibody avoid repeat freeze-thaw cycles.
Storage:	4 °C/-20 °C
Storage Comment:	For short periods of storage (days) store at 4 °C. For longer periods of storage, store GF11 antibody at -20 °C.

Images



Western Blotting

Image 1.