

Datasheet for ABIN2460340

anti-ZNF391 antibody[Go to Product page](#)**1** Image

Overview

Quantity:	100 µL
Target:	ZNF391
Reactivity:	Human
Host:	Rabbit
Clonality:	Polyclonal
Conjugate:	This ZNF391 antibody is un-conjugated
Application:	Western Blotting (WB), ELISA, Immunohistochemistry (IHC)

Product Details

Immunogen:	Antibody produced in rabbits immunized with a synthetic peptide corresponding a region of human LOC346157.
Purification:	Antibody is purified by peptide affinity chromatography method.

Target Details

Target:	ZNF391
Alternative Name:	LOC346157 (ZNF391 Products)
Background:	LOC346157 is a new candidate transcription factor.
Molecular Weight:	46 kDa
Gene ID:	346157
NCBI Accession:	XP_294077

Target Details

UniProt: [Q9UJN7](#)

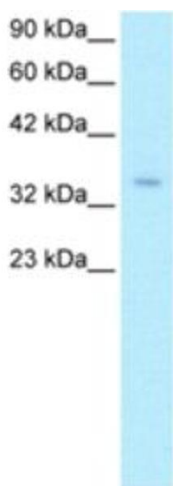
Application Details

Application Notes:	LOC346157 antibody can be used for detection of LOC346157 by ELISA at 1:12500. LOC346157 antibody can be used for detection of LOC346157 by western blot at 1.0-8.0 µg/mL, and HRP conjugated secondary antibody should be diluted 1:50,000 - 100,000.
Restrictions:	For Research Use only

Handling

Format:	Lyophilized
Reconstitution:	Add 50 µL of distilled water. Final antibody concentration is 1 mg/mL.
Concentration:	1 mg/mL
Buffer:	Antibody is lyophilized in PBS buffer with 2 % sucrose.
Handling Advice:	As with any antibody avoid repeat freeze-thaw cycles.
Storage:	4 °C/-20 °C
Storage Comment:	For short periods of storage (days) store at 4 °C. For longer periods of storage, store LOC346157 antibody at -20 °C.

Images



Western Blotting

Image 1.