

Datasheet for ABIN2460344

anti-INSM1 antibody[Go to Product page](#)**1** Image

Overview

Quantity:	100 µL
Target:	INSM1
Reactivity:	Human, Mouse, Rat, Dog
Host:	Rabbit
Clonality:	Polyclonal
Application:	Western Blotting (WB), Immunohistochemistry (IHC), ELISA

Product Details

Immunogen:	Antibody produced in rabbits immunized with a synthetic peptide corresponding a region of human INSM1.
Purification:	Antibody is purified by protein A chromatography method.

Target Details

Target:	INSM1
Alternative Name:	INSM1 (INSM1 Products)
Background:	Insulinoma-associated 1 (INSM1) gene is intronless and encodes a protein containing both a zinc finger DNA-binding domain and a putative prohormone domain. This gene is a sensitive marker for neuroendocrine differentiation of human lung tumors.
Molecular Weight:	53 kDa
Gene ID:	3642
NCBI Accession:	NP_002187

Target Details

UniProt: [Q01101](#)

Application Details

Application Notes: INSM1 antibody can be used for detection of INSM1 by ELISA at 1:312500. INSM1 antibody can be used for detection of INSM1 by western blot at 1.25 µg/mL, and HRP conjugated secondary antibody should be diluted 1:50,000 - 100,000.

Restrictions: For Research Use only

Handling

Format: Lyophilized

Reconstitution: Add 100 µL of distilled water. Final antibody concentration is 1 mg/mL.

Concentration: 1 mg/mL

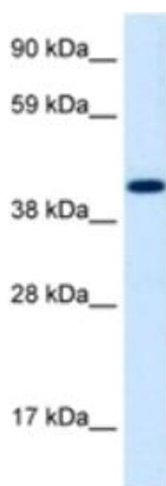
Buffer: Antibody is lyophilized in PBS buffer with 2 % sucrose.

Handling Advice: As with any antibody avoid repeat freeze-thaw cycles.

Storage: 4 °C/-20 °C

Storage Comment: For short periods of storage (days) store at 4 °C. For longer periods of storage, store INSM1 antibody at -20 °C.

Images



Western Blotting

Image 1.