

Datasheet for ABIN2460347

anti-LMX1A antibody[Go to Product page](#)**1** Image

Overview

Quantity:	100 µL
Target:	LMX1A
Reactivity:	Human, Rat, Dog
Host:	Rabbit
Clonality:	Polyclonal
Conjugate:	This LMX1A antibody is un-conjugated
Application:	Western Blotting (WB), ELISA, Immunohistochemistry (IHC)

Product Details

Immunogen:	Antibody produced in rabbits immunized with a synthetic peptide corresponding a region of human LMX1A.
Purification:	Antibody is purified by protein A chromatography method.

Target Details

Target:	LMX1A
Alternative Name:	LMX1A (LMX1A Products)
Background:	LMX1A is necessary for the expression of bone morphogenetic protein (BMP), and for the normal generation and differentiation of the dorsal-most spinal cord neurons, the dl1 interneurons
Molecular Weight:	43 kDa, 15 kDa
Gene ID:	4009

Target Details

NCBI Accession:	NP_796372
UniProt:	Q8TE12
Pathways:	Dopaminergic Neurogenesis

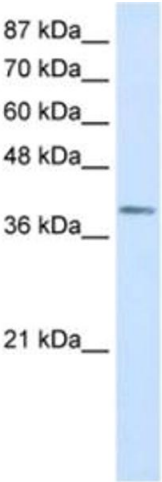
Application Details

Application Notes:	LMX1A antibody can be used for detection of LMX1A by ELISA at 1:62500. LMX1A antibody can be used for detection of LMX1A by western blot at 0.3125 µg/mL, and HRP conjugated secondary antibody should be diluted 1:50,000 - 100,000.
Restrictions:	For Research Use only

Handling

Format:	Lyophilized
Reconstitution:	Add 100 µL of distilled water. Final antibody concentration is 1 mg/mL.
Concentration:	1 mg/mL
Buffer:	Antibody is lyophilized in PBS buffer with 2 % sucrose.
Handling Advice:	As with any antibody avoid repeat freeze-thaw cycles.
Storage:	4 °C/-20 °C
Storage Comment:	For short periods of storage (days) store at 4 °C. For longer periods of storage, store LMX1A antibody at -20 °C.

Images



Western Blotting

Image 1.