

Datasheet for ABIN2460415

anti-KIN antibody[Go to Product page](#)**1** Image

Overview

| | |
|--------------|------------------------------------|
| Quantity: | 100 µL |
| Target: | KIN |
| Reactivity: | Human, Rat, Dog |
| Host: | Rabbit |
| Clonality: | Polyclonal |
| Conjugate: | This KIN antibody is un-conjugated |
| Application: | Western Blotting (WB), ELISA |

Product Details

| | |
|---------------|------------------------------------------------------------------------------------------------------|
| Immunogen: | Antibody produced in rabbits immunized with a synthetic peptide corresponding a region of human KIN. |
| Purification: | Antibody is purified by protein A chromatography method. |

Target Details

| | |
|-------------------|-----------------------------------------------------------------------------------------------------------------------------------------------------------------------------------------------------------------------------------------------------------------------------------------------------------------------------------------------------------------------------------------------------------------------------------------------------------------------------------------------|
| Target: | KIN |
| Alternative Name: | KIN (KIN Products) |
| Background: | Kin is a nuclear protein that forms intranuclear foci during proliferation and is redistributed in the nucleoplasm during the cell cycle. Short-wave ultraviolet light provokes the relocation of the protein, suggesting its participation in the cellular response to DNA damage. Originally selected based on protein-binding with RecA antibodies, the mouse protein presents a limited similarity with a functional domain of the bacterial RecA protein, a characteristic shared by the |

Target Details

human ortholog. The protein encoded by this gene is a nuclear protein that forms intranuclear foci during proliferation and is redistributed in the nucleoplasm during the cell cycle. Short-wave ultraviolet light provokes the relocalization of the protein, suggesting its participation in the cellular response to DNA damage. Originally selected based on protein-binding with RecA antibodies, the mouse protein presents a limited similarity with a functional domain of the bacterial RecA protein, a characteristic shared by this human ortholog.

Molecular Weight: 45 kDa

Gene ID: 22944

NCBI Accession: [NP_036443](#)

UniProt: [O60870](#)

Application Details

Application Notes: KIN antibody can be used for detection of KIN by ELISA at 1:312500. KIN antibody can be used for detection of KIN by western blot at 2.5 µg/mL, and HRP conjugated secondary antibody should be diluted 1:50,000 - 100,000.

Restrictions: For Research Use only

Handling

Format: Lyophilized

Reconstitution: Add 50 µL of distilled water. Final antibody concentration is 1 mg/mL.

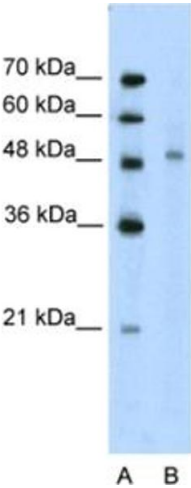
Concentration: 1 mg/mL

Buffer: Antibody is lyophilized in PBS buffer with 2 % sucrose.

Handling Advice: As with any antibody avoid repeat freeze-thaw cycles.

Storage: 4 °C/-20 °C

Storage Comment: For short periods of storage (days) store at 4 °C. For longer periods of storage, store KIN antibody at -20 °C.



Western Blotting

Image 1.