

Datasheet for ABIN2460435

anti-TLE3 antibody[Go to Product page](#)**1** Image

Overview

Quantity:	100 µL
Target:	TLE3
Reactivity:	Human, Dog
Host:	Rabbit
Clonality:	Polyclonal
Conjugate:	This TLE3 antibody is un-conjugated
Application:	Western Blotting (WB), ELISA

Product Details

Immunogen:	Antibody produced in rabbits immunized with a synthetic peptide corresponding a region of human TLE3.
Purification:	Antibody is purified by protein A chromatography method.

Target Details

Target:	TLE3
Alternative Name:	TLE3 (TLE3 Products)
Background:	The TLE genes are differentially expressed and encode nuclear proteins, consistent with the presence of sequence motifs associated with nuclear functions. These genes are the human homologues of Drosophila groucho, a member of the Notch signaling pathway which controls a number of different cell-fate choices in invertebrates and vertebrates.
Molecular Weight:	83 kDa

Target Details

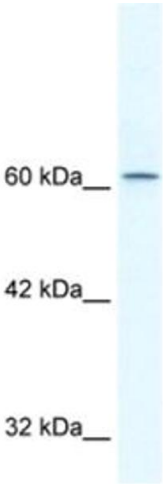
Gene ID:	7090
NCBI Accession:	NP_005069
UniProt:	Q04726
Pathways:	SARS-CoV-2 Protein Interactome

Application Details

Application Notes:	TLE3 antibody can be used for detection of TLE3 by ELISA at 1:62500. TLE3 antibody can be used for detection of TLE3 by western blot at 2.5 µg/mL, and HRP conjugated secondary antibody should be diluted 1:50,000 - 100,000.
Restrictions:	For Research Use only

Handling

Format:	Lyophilized
Reconstitution:	Add 100 µL of distilled water. Final antibody concentration is 1 mg/mL.
Concentration:	1 mg/mL
Buffer:	Antibody is lyophilized in PBS buffer with 2 % sucrose.
Handling Advice:	As with any antibody avoid repeat freeze-thaw cycles.
Storage:	4 °C/-20 °C
Storage Comment:	For short periods of storage (days) store at 4 °C. For longer periods of storage, store TLE3 antibody at -20 °C.



Western Blotting

Image 1.