

Datasheet for ABIN2460444

anti-SIX Homeobox 6 antibody[Go to Product page](#)**1** Image

Overview

Quantity:	100 µL
Target:	SIX Homeobox 6 (SIX6)
Reactivity:	Human, Mouse, Rat, Dog
Host:	Rabbit
Clonality:	Polyclonal
Conjugate:	This SIX Homeobox 6 antibody is un-conjugated
Application:	Western Blotting (WB), ELISA, Immunohistochemistry (IHC)

Product Details

Immunogen:	Antibody produced in rabbits immunized with a synthetic peptide corresponding a region of human SIX6.
Purification:	Antibody is purified by peptide affinity chromatography method.

Target Details

Target:	SIX Homeobox 6 (SIX6)
Alternative Name:	SIX6 (SIX6 Products)
Background:	SIX6 is a member of SIX family. It is the homologue of the chick Six6 (Optx2) gene. SIX6 is closely related to SIX3 and is expressed in the developing and adult human retina.
Molecular Weight:	28 kDa
Gene ID:	4990

Target Details

NCBI Accession: [NP_031400](#)

UniProt: [O95475](#)

Application Details

Application Notes: SIX6 antibody can be used for detection of SIX6 by ELISA at 1:312500. SIX6 antibody can be used for detection of SIX6 by western blot at 0.5 µg/mL, and HRP conjugated secondary antibody should be diluted 1:50,000 - 100,000.

Restrictions: For Research Use only

Handling

Format: Lyophilized

Reconstitution: Add 50 µL of distilled water. Final antibody concentration is 1 mg/mL.

Concentration: 1 mg/mL

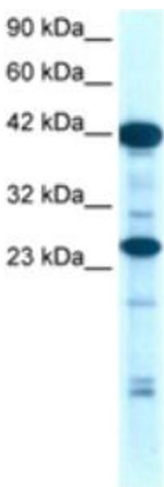
Buffer: Antibody is lyophilized in PBS buffer with 2 % sucrose.

Handling Advice: As with any antibody avoid repeat freeze-thaw cycles.

Storage: 4 °C/-20 °C

Storage Comment: For short periods of storage (days) store at 4 °C. For longer periods of storage, store SIX6 antibody at -20 °C.

Images



Western Blotting

Image 1.