

Datasheet for ABIN2460495

anti-POU2F3 antibody[Go to Product page](#)**1** Image

Overview

| | |
|--------------|--|
| Quantity: | 100 µL |
| Target: | POU2F3 |
| Reactivity: | Human, Mouse, Rat, Dog |
| Host: | Rabbit |
| Clonality: | Polyclonal |
| Conjugate: | This POU2F3 antibody is un-conjugated |
| Application: | Western Blotting (WB), ELISA, Immunohistochemistry (IHC) |

Product Details

| | |
|---------------|---|
| Immunogen: | Antibody produced in rabbits immunized with a synthetic peptide corresponding a region of human POU2F3. |
| Purification: | Antibody is purified by peptide affinity chromatography method. |

Target Details

| | |
|-------------------|--|
| Target: | POU2F3 |
| Alternative Name: | POU2F3 (POU2F3 Products) |
| Background: | POU domain genes encode a family of highly conserved transacting factors that influence the transcriptional activity of several cell type-specific and ubiquitous genes. |
| Molecular Weight: | 47 kDa |
| Gene ID: | 25833 |

Target Details

NCBI Accession: [NP_055167](#)

UniProt: [Q9UKI9](#)

Application Details

Application Notes: POU2F3 antibody can be used for detection of POU2F3 by ELISA at 1:1562500. POU2F3 antibody can be used for detection of POU2F3 by western blot at 0.5 µg/mL, and HRP conjugated secondary antibody should be diluted 1:50,000 - 100,000.

Restrictions: For Research Use only

Handling

Format: Lyophilized

Reconstitution: Add 50 µL of distilled water. Final antibody concentration is 1 mg/mL.

Concentration: 1 mg/mL

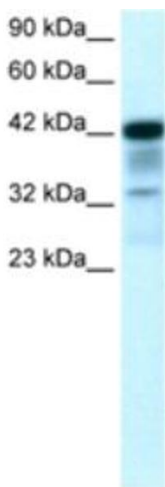
Buffer: Antibody is lyophilized in PBS buffer with 2 % sucrose.

Handling Advice: As with any antibody avoid repeat freeze-thaw cycles.

Storage: 4 °C/-20 °C

Storage Comment: For short periods of storage (days) store at 4 °C. For longer periods of storage, store POU2F3 antibody at -20 °C.

Images



Western Blotting

Image 1.