

Datasheet for ABIN2460507

anti-ZNF621 antibody[Go to Product page](#)**1** Image

Overview

| | |
|--------------|---------------------------------------|
| Quantity: | 100 µL |
| Target: | ZNF621 |
| Reactivity: | Human, Dog |
| Host: | Rabbit |
| Clonality: | Polyclonal |
| Conjugate: | This ZNF621 antibody is un-conjugated |
| Application: | ELISA, Western Blotting (WB) |

Product Details

| | |
|---------------|---|
| Immunogen: | Antibody produced in rabbits immunized with a synthetic peptide corresponding a region of human ZNF621. |
| Purification: | Antibody is purified by protein A chromatography method. |

Target Details

| | |
|-------------------|--|
| Target: | ZNF621 |
| Alternative Name: | ZNF621 (ZNF621 Products) |
| Background: | ZNF621 is a candidate transcription factor |
| Molecular Weight: | 49 kDa, 49 kDa |
| Gene ID: | 285268 |
| NCBI Accession: | NP_940886 |

Target Details

UniProt: Q6ZSS3

Application Details

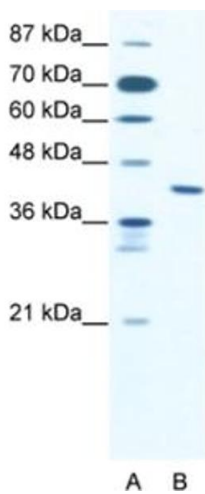
Application Notes: ZNF621 antibody can be used for detection of ZNF621 by ELISA at 1:1562500. ZNF621 antibody can be used for detection of ZNF621 by western blot at 2.5 µg/mL, and HRP conjugated secondary antibody should be diluted 1:50,000 - 100,000.

Restrictions: For Research Use only

Handling

| | |
|------------------|--|
| Format: | Lyophilized |
| Reconstitution: | Add 100 µL of distilled water. Final antibody concentration is 1 mg/mL. |
| Concentration: | 1 mg/mL |
| Buffer: | Antibody is lyophilized in PBS buffer with 2 % sucrose. |
| Handling Advice: | As with any antibody avoid repeat freeze-thaw cycles. |
| Storage: | 4 °C/-20 °C |
| Storage Comment: | For short periods of storage (days) store at 4 °C. For longer periods of storage, store ZNF621 antibody at -20 °C. |

Images



Western Blotting

Image 1.