

Datasheet for ABIN2460621

anti-ZNF624 antibody[Go to Product page](#)**1** Image

Overview

Quantity:	100 µL
Target:	ZNF624
Reactivity:	Human, Dog
Host:	Rabbit
Clonality:	Polyclonal
Conjugate:	This ZNF624 antibody is un-conjugated
Application:	ELISA, Western Blotting (WB)

Product Details

Immunogen:	Antibody produced in rabbits immunized with a synthetic peptide corresponding a region of human ZNF624.
Purification:	Antibody is purified by peptide affinity chromatography method.

Target Details

Target:	ZNF624
Alternative Name:	ZNF624 (ZNF624 Products)
Background:	This gene, located on chromosome 17, encodes a protein that is part of the zinc finger family.
Molecular Weight:	100 kDa
Gene ID:	57547
NCBI Accession:	NP_065838

Target Details

UniProt: [Q6ZN27](#)

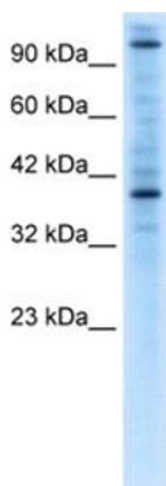
Application Details

Application Notes:	ZNF624 antibody can be used for detection of ZNF624 by ELISA at 1:62500. ZNF624 antibody can be used for detection of ZNF624 by western blot at 1.0 µg/mL, and HRP conjugated secondary antibody should be diluted 1:50,000 - 100,000.
Restrictions:	For Research Use only

Handling

Format:	Lyophilized
Reconstitution:	Add 50 µL of distilled water. Final antibody concentration is 1 mg/mL.
Concentration:	1 mg/mL
Buffer:	Antibody is lyophilized in PBS buffer with 2 % sucrose.
Handling Advice:	As with any antibody avoid repeat freeze-thaw cycles.
Storage:	4 °C/-20 °C
Storage Comment:	For short periods of storage (days) store at 4 °C. For longer periods of storage, store ZNF624 antibody at -20 °C.

Images



Western Blotting

Image 1.