

Datasheet for ABIN2460645  
**anti-POU3F1 antibody**



[Go to Product page](#)

1 Image

## Overview

Quantity:	100 µL
Target:	POU3F1
Reactivity:	Human, Mouse, Rat, Dog
Host:	Rabbit
Clonality:	Polyclonal
Conjugate:	This POU3F1 antibody is un-conjugated
Application:	ELISA, Western Blotting (WB), Immunohistochemistry (IHC)

## Product Details

Immunogen:	Antibody produced in rabbits immunized with a synthetic peptide corresponding a region of human POU3F1.
Purification:	Antibody is purified by protein A chromatography method.

## Target Details

Target:	POU3F1
Alternative Name:	POU3F1 ( <a href="#">POU3F1 Products</a> )
Background:	POU3F1 is a member of the POU domain family of proteins, and regulates events during neurogenesis and myelination.
Molecular Weight:	45 kDa
Gene ID:	5453

Target Details

NCBI Accession:	NP_002690
UniProt:	Q03052

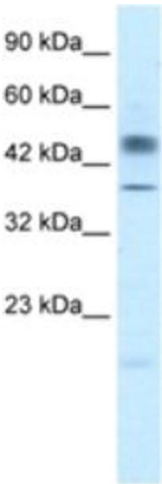
Application Details

Application Notes:	POU3F1 antibody can be used for detection of POU3F1 by ELISA at 1:312500. POU3F1 antibody can be used for detection of POU3F1 by western blot at 2.5 µg/mL, and HRP conjugated secondary antibody should be diluted 1:50,000 - 100,000.
Restrictions:	For Research Use only

Handling

Format:	Lyophilized
Reconstitution:	Add 100 µL of distilled water. Final antibody concentration is 1 mg/mL.
Concentration:	1 mg/mL
Buffer:	Antibody is lyophilized in PBS buffer with 2 % sucrose.
Handling Advice:	As with any antibody avoid repeat freeze-thaw cycles.
Storage:	4 °C/-20 °C
Storage Comment:	For short periods of storage (days) store at 4 °C. For longer periods of storage, store POU3F1 antibody at -20 °C.

Images



Western Blotting

Image 1.