

Datasheet for ABIN2460674

anti-RFX4 antibody[Go to Product page](#)**1** Image

Overview

Quantity:	100 µL
Target:	RFX4
Reactivity:	Human
Host:	Rabbit
Clonality:	Polyclonal
Conjugate:	This RFX4 antibody is un-conjugated
Application:	Western Blotting (WB), ELISA

Product Details

Immunogen:	Antibody produced in rabbits immunized with a synthetic peptide corresponding a region of human RFX4.
Purification:	Antibody is purified by protein A chromatography method.

Target Details

Target:	RFX4
Alternative Name:	RFX4 (RFX4 Products)
Background:	RFX4 is a transcription factors that contain a highly-conserved winged helix DNA binding domain. RFX4 is structurally related to regulatory factors X1, X2, X3, and X5. It has been shown to interact with itself as well as with regulatory factors X2 and X3, but it does not interact with regulatory factor X1. RFX4 may be a transcriptional repressor rather than a transcriptional activator. This gene is a member of the regulatory factor X gene family, which encodes

Target Details

transcription factors that contain a highly-conserved winged helix DNA binding domain. The protein encoded by this gene is structurally related to regulatory factors X1, X2, X3, and X5. It has been shown to interact with itself as well as with regulatory factors X2 and X3, but it does not interact with regulatory factor X1. This protein may be a transcriptional repressor rather than a transcriptional activator. Three transcript variants encoding different isoforms have been described for this gene.

Molecular Weight: 64 kDa, 73 kDa, 83 kDa

Gene ID: 5992

NCBI Accession: [NP_002911](#)

UniProt: [Q96S80](#)

Application Details

Application Notes: RFX4 antibody can be used for detection of RFX4 by ELISA at 1:1562500. RFX4 antibody can be used for detection of RFX4 by western blot at 5 µg/mL, and HRP conjugated secondary antibody should be diluted 1:50,000 - 100,000.

Restrictions: For Research Use only

Handling

Format: Lyophilized

Reconstitution: Add 100 µL of distilled water. Final antibody concentration is 1 mg/mL.

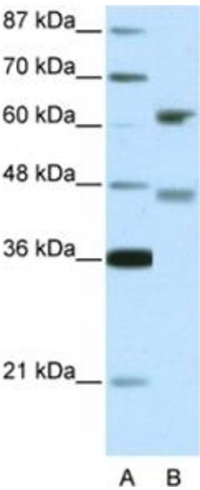
Concentration: 1 mg/mL

Buffer: Antibody is lyophilized in PBS buffer with 2 % sucrose.

Handling Advice: As with any antibody avoid repeat freeze-thaw cycles.

Storage: 4 °C/-20 °C

Storage Comment: For short periods of storage (days) store at 4 °C. For longer periods of storage, store RFX4 antibody at -20 °C.



Western Blotting

Image 1.