

Datasheet for ABIN2460724

anti-TCF21 antibody[Go to Product page](#)**1** Image

Overview

Quantity:	100 µL
Target:	TCF21
Reactivity:	Human, Mouse, Rat, Dog
Host:	Rabbit
Clonality:	Polyclonal
Conjugate:	This TCF21 antibody is un-conjugated
Application:	Western Blotting (WB), ELISA

Product Details

Immunogen:	Antibody produced in rabbits immunized with a synthetic peptide corresponding a region of human TCF21.
Purification:	Antibody is purified by peptide affinity chromatography method.

Target Details

Target:	TCF21
Alternative Name:	TCF21 (TCF21 Products)
Background:	The TCF21 gene encodes a transcription factor of the basic helix-loop-helix family. The TCF21 product is mesoderm specific, and expressed in embryonic epicardium, mesenchyme-derived tissues of lung, gut, gonad, and both mesenchymal and glomerular epithelial cells in the kidney.
Molecular Weight:	20 kDa, 20 kDa
Gene ID:	6943

Target Details

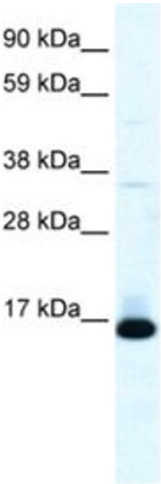
NCBI Accession:	NP_003197
UniProt:	O43680
Pathways:	Intracellular Steroid Hormone Receptor Signaling Pathway , Regulation of Intracellular Steroid Hormone Receptor Signaling

Application Details

Application Notes:	TCF21 antibody can be used for detection of TCF21 by ELISA at 1:12500. TCF21 antibody can be used for detection of TCF21 by western blot at 0.5 µg/mL, and HRP conjugated secondary antibody should be diluted 1:50,000 - 100,000.
Restrictions:	For Research Use only

Handling

Format:	Lyophilized
Reconstitution:	Add 50 µL of distilled water. Final antibody concentration is 1 mg/mL.
Concentration:	1 mg/mL
Buffer:	Antibody is lyophilized in PBS buffer with 2 % sucrose.
Handling Advice:	As with any antibody avoid repeat freeze-thaw cycles.
Storage:	4 °C/-20 °C
Storage Comment:	For short periods of storage (days) store at 4 °C. For longer periods of storage, store TCF21 antibody at -20 °C.



Western Blotting

Image 1.