

Datasheet for ABIN2460735
anti-WNT8B antibody



[Go to Product page](#)

1 Image

Overview

Quantity:	100 µL
Target:	WNT8B
Reactivity:	Human, Mouse, Rat, Dog
Host:	Rabbit
Clonality:	Polyclonal
Conjugate:	This WNT8B antibody is un-conjugated
Application:	Western Blotting (WB), ELISA

Product Details

Immunogen:	Antibody produced in rabbits immunized with a synthetic peptide corresponding a region of human WNT8B.
Purification:	Antibody is purified by protein A chromatography method.

Target Details

Target:	WNT8B
Alternative Name:	WNT8B (WNT8B Products)
Background:	The WNT family consists of several secreted signaling proteins. These proteins have been implicated in oncogenesis and in several developmental processes, including regulation of cell fate and patterning during embryogenesis. WNT8B is a protein which shows 95% , 86% and 71% amino acid identity to the mouse, zebrafish and Xenopus Wnt8B proteins, respectively. The expression patterns of the human and mouse genes appear identical and are

Target Details

restricted to the developing brain. The chromosomal location of this gene to 10q24 suggests it as a candidate gene for partial epilepsy. The WNT gene family consists of structurally related genes which encode secreted signaling proteins. These proteins have been implicated in oncogenesis and in several developmental processes, including regulation of cell fate and patterning during embryogenesis. This gene is a member of the WNT gene family. It encodes a protein which shows 95%, 86% and 71% amino acid identity to the mouse, zebrafish and Xenopus Wnt8B proteins, respectively. The expression patterns of the human and mouse genes appear identical and are restricted to the developing brain. The chromosomal location of this gene to 10q24 suggests it as a candidate gene for partial epilepsy.

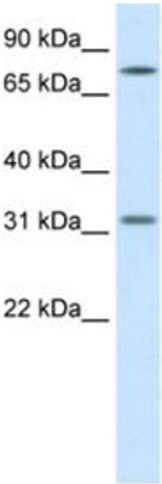
Molecular Weight:	39 kDa
Gene ID:	7479
NCBI Accession:	NP_003384
UniProt:	Q93098
Pathways:	WNT Signaling

Application Details

Application Notes:	WNT8B antibody can be used for detection of WNT8B by ELISA at 1:1562500. WNT8B antibody can be used for detection of WNT8B by western blot at 1.25 µg/mL, and HRP conjugated secondary antibody should be diluted 1:50,000 - 100,000.
Restrictions:	For Research Use only

Handling

Format:	Lyophilized
Reconstitution:	Add 100 µL of distilled water. Final antibody concentration is 1 mg/mL.
Concentration:	1 mg/mL
Buffer:	Antibody is lyophilized in PBS buffer with 2 % sucrose.
Handling Advice:	As with any antibody avoid repeat freeze-thaw cycles.
Storage:	4 °C/-20 °C
Storage Comment:	For short periods of storage (days) store at 4 °C. For longer periods of storage, store WNT8B antibody at -20 °C.



Western Blotting

Image 1.