



Datasheet for ABIN2460789

anti-MLL4 antibody



[Go to Product page](#)

1 Image

Overview

Quantity:	100 µL
Target:	MLL4
Reactivity:	Human
Host:	Rabbit
Clonality:	Polyclonal
Conjugate:	This MLL4 antibody is un-conjugated
Application:	ELISA, Western Blotting (WB)

Product Details

Immunogen:	Antibody produced in rabbits immunized with a synthetic peptide corresponding a region of human MLL4.
Purification:	Antibody is purified by protein A chromatography method.

Target Details

Target:	MLL4
Alternative Name:	MLL4 (MLL4 Products)
Background:	MLL4 a protein which contains multiple domains including a CXXC zinc finger, three PHD zinc fingers, two FY-rich domains, and a SET (suppressor of variegation, enhancer of zeste, and trithorax) domain. The SET domain is a conserved C-terminal domain that characterizes proteins of the MLL (mixed-lineage leukemia) family. MLL4 is ubiquitously expressed in adult tissues. It is also amplified in solid tumor cell lines, and may be involved in human cancer

Target Details

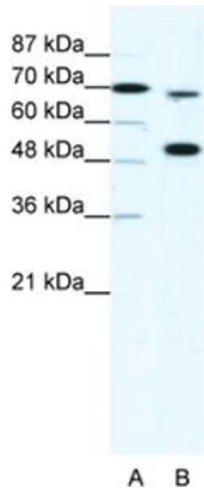
Molecular Weight:	64 kDa, 294 kDa
Gene ID:	9757
Pathways:	Intracellular Steroid Hormone Receptor Signaling Pathway , Regulation of Intracellular Steroid Hormone Receptor Signaling , Warburg Effect

Application Details

Application Notes:	MLL4 antibody can be used for detection of MLL4 by ELISA at 1:12500. MLL4 antibody can be used for detection of MLL4 by western blot at 5 µg/mL, and HRP conjugated secondary antibody should be diluted 1:50,000 - 100,000.
Restrictions:	For Research Use only

Handling

Format:	Lyophilized
Reconstitution:	Add 100 µL of distilled water. Final antibody concentration is 1 mg/mL.
Concentration:	1 mg/mL
Buffer:	Antibody is lyophilized in PBS buffer with 2 % sucrose.
Handling Advice:	As with any antibody avoid repeat freeze-thaw cycles.
Storage:	4 °C/-20 °C
Storage Comment:	For short periods of storage (days) store at 4 °C. For longer periods of storage, store MLL4 antibody at -20 °C.



Western Blotting

Image 1.