



[Go to Product page](#)

Datasheet for ABIN2460835
anti-KIF3C antibody

1 Image

Overview

Quantity:	100 µL
Target:	KIF3C
Reactivity:	Human, Mouse, Rat, Dog
Host:	Rabbit
Clonality:	Polyclonal
Conjugate:	This KIF3C antibody is un-conjugated
Application:	Western Blotting (WB), ELISA

Product Details

Immunogen:	Antibody produced in rabbits immunized with a synthetic peptide corresponding a region of human KIF3C.
Purification:	Antibody is purified by peptide affinity chromatography method.

Target Details

Target:	KIF3C
Alternative Name:	KIF3C (KIF3C Products)
Background:	KIF3C is a member of KIF3 family. It is highly enriched in neural tissues such as brain, spinal cord, and retina. It is an anterograde motor.
Molecular Weight:	89 kDa
Gene ID:	3797

Target Details

NCBI Accession:	NP_002245
UniProt:	O14782
Pathways:	Hedgehog Signaling

Application Details

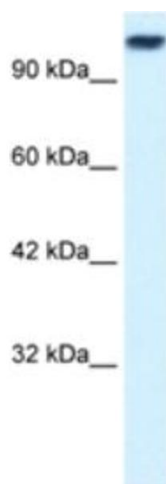
Application Notes: KIF3C antibody can be used for detection of KIF3C by ELISA at 1:12500. KIF3C antibody can be used for detection of KIF3C by western blot at 0.2 µg/mL, and HRP conjugated secondary antibody should be diluted 1:50,000 - 100,000.

Restrictions: For Research Use only

Handling

Format:	Lyophilized
Reconstitution:	Add 50 µL of distilled water. Final antibody concentration is 1 mg/mL.
Concentration:	1 mg/mL
Buffer:	Antibody is lyophilized in PBS buffer with 2 % sucrose.
Handling Advice:	As with any antibody avoid repeat freeze-thaw cycles.
Storage:	4 °C/-20 °C
Storage Comment:	For short periods of storage (days) store at 4 °C. For longer periods of storage, store KIF3C antibody at -20 °C.

Images



Western Blotting

Image 1.